

CAMBRIDGE WORKING PAPERS IN ECONOMICS  
CAMBRIDGE-INET WORKING PAPERSA Counterfactual Economic Analysis of Covid-19  
Using a Threshold Augmented Multi-Country ModelAlexander  
Chudik  
Federal Reserve  
Bank of DallasKamiar  
Mohaddes  
University of  
CambridgeM. Hashem  
Pesaran  
University of  
Southern CaliforniaMehdi  
Raissi  
International  
Monetary FundAlessandro  
Rebucci  
Johns Hopkins  
University

## Abstract

This paper develops a threshold-augmented dynamic multi-country model (TG-VAR) to quantify the macroeconomic effects of Covid-19. We show that there exist threshold effects in the relationship between output growth and excess global volatility at individual country levels in a significant majority of advanced economies and in the case of several emerging markets. We then estimate a more general multi-country model augmented with these threshold effects as well as long term interest rates, oil prices, exchange rates and equity returns to perform counterfactual analyses. We distinguish common global factors from trade-related spillovers, and identify the Covid-19 shock using GDP growth forecast revisions of the IMF in 2020Q1. We account for sample uncertainty by bootstrapping the multi-country model estimated over four decades of quarterly observations. Our results show that the Covid-19 pandemic will lead to a significant fall in world output that is most likely long-lasting, with outcomes that are quite heterogeneous across countries and regions. While the impact on China and other emerging Asian economies are estimated to be less severe, the United States, the United Kingdom, and several other advanced economies may experience deeper and longer-lasting effects. Non-Asian emerging markets stand out for their vulnerability. We show that no country is immune to the economic fallout of the pandemic because of global interconnections as evidenced by the case of Sweden. We also find that long-term interest rates could fall significantly below their recent lows in core advanced economies, but this does not seem to be the case in emerging markets.

## Reference Details

2088  
2020/40  
Cambridge Working Papers in Economics  
Cambridge-INET Working Paper SeriesPublished  
18 September 2020Key Words  
Threshold-augmented Global VAR (TGVAR), international business cycle, Covid-19, global volatility, threshold effects.JEL Codes  
C32, E44, F44.Websites  
[www.econ.cam.ac.uk/cwpe](http://www.econ.cam.ac.uk/cwpe)  
[www.inet.econ.cam.ac.uk/working-papers](http://www.inet.econ.cam.ac.uk/working-papers)

# A Counterfactual Economic Analysis of Covid-19 Using a Threshold Augmented Multi-Country Model\*

Alexander Chudik<sup>a</sup>, Kamiar Mohaddes<sup>b</sup>,  
M. Hashem Pesaran<sup>c</sup>, Mehdi Raissi<sup>d</sup>, and Alessandro Rebucci<sup>e</sup>

<sup>a</sup> Federal Reserve Bank of Dallas, USA

<sup>b</sup> Judge Business School and King's College, University of Cambridge, UK

<sup>c</sup> University of Southern California, USA and Trinity College, Cambridge, UK

<sup>d</sup> International Monetary Fund, Washington DC, USA

<sup>e</sup> Johns Hopkins University Carey Business School, CEPR and NBER

September 17, 2020

## Abstract

This paper develops a threshold-augmented dynamic multi-country model (TG-VAR) to quantify the macroeconomic effects of Covid-19. We show that there exist threshold effects in the relationship between output growth and excess global volatility at individual country levels in a significant majority of advanced economies and in the case of several emerging markets. We then estimate a more general multi-country model augmented with these threshold effects as well as long term interest rates, oil prices, exchange rates and equity returns to perform counterfactual analyses. We distinguish common global factors from trade-related spillovers, and identify the Covid-19 shock using GDP growth forecast revisions of the IMF in 2020Q1. We account for sample uncertainty by bootstrapping the multi-country model estimated over four decades of quarterly observations. Our results show that the Covid-19 pandemic will lead to a significant fall in world output that is most likely long-lasting, with outcomes that are quite heterogeneous across countries and regions. While the impact on China and other emerging Asian economies are estimated to be less severe, the United States, the United Kingdom, and several other advanced economies may experience deeper and longer-lasting effects. Non-Asian emerging markets stand out for their vulnerability. We show that no country is immune to the economic fallout of the pandemic because of global interconnections as evidenced by the case of Sweden. We also find that long-term interest rates could fall significantly below their recent lows in core advanced economies, but this does not seem to be the case in emerging markets.

**JEL Classifications:** C32, E44, F44.

**Keywords:** Threshold-augmented Global VAR (TGVAR), international business cycle, Covid-19, global volatility, threshold effects.

---

\*We are grateful to Ron Smith for helpful comments and suggestions. The views expressed here are those of the authors and do not necessarily represent those of the Federal Reserve Bank of Dallas, the Federal Reserve System, the International Monetary Fund or IMF policy.

# 1 Introduction

There is no doubt that the rapid spread of Covid-19 across the world and policy measures adopted to slow it down (including through isolation, lockdowns, and widespread closures) have led to large negative economic shocks, not experienced before. The adverse economic effects of the pandemic at individual country levels have also become accentuated by trade and financial linkages that have been on the rise since the Second World War. Unlike a typical macroeconomic disturbance, the Covid-19 shock and policies implemented to contain it have brought about simultaneous disruptions to demand and supply in a totally new economic environment, where consumers and firms are faced with additional uncertainties about the disease itself (its spread, possible cure and vaccine development).

On the supply side, infections reduce labor supply and productivity; and lockdowns, business closures and social distancing cause supply disruptions. On the demand side, layoffs and the loss of income (from morbidity, quarantines, and unemployment) and worse economic prospects reduce household consumption and firms' investment. The extreme uncertainty about the path, duration, magnitude, and impact of the Covid-19 pandemic could pose a vicious cycle of dampening business and consumer confidence and tightening financial conditions, which could lead to job losses and investment cuts in expectation of lower future aggregate demand. Countries or regions that rely heavily on oil revenues, tourism, and exports of goods and services are particularly vulnerable. Moreover, domestic disruptions could spill over to other countries through trade, financial, and global value chain linkages, intensifying the initial macroeconomic effects. The severity of the Covid-19 shock and the heterogeneity of its outcome across different sectors of the economy and population groups also present new methodological challenges, and shed doubts on the validity of standard log-linearized approximation routinely used in the empirical macroeconomic modelling.

A rapidly growing literature investigates the macroeconomic effects of Covid-19. [McKibbin and Fernando \(2020\)](#) explore the global macroeconomic effects of different scenarios of how Covid-19 might evolve in the year ahead using a hybrid DSGE/CGE model. They underscore the importance of spillover effects and show that even a contained outbreak could significantly impact the global economy in the short run. [Bonadio et al. \(2020\)](#) study the impact of Covid-19 on output growth in 64 countries and investigate the contribution of global supply chains to these adverse effects. [Ludvigson et al. \(2020\)](#) quantify the macroeconomic impact of Covid-19 in the United States using a VAR framework and a gauge of the magnitude of the Covid-19 shock in relation to past costly disasters. [Baqae and Farhi \(2020\)](#) consider possible non-linearities in response to the Covid-19 shock in a multi-sectoral model. They develop a disaggregated structural model with input-output linkages, as well as downward nominal wage rigidities and a zero lower bound constraint on nominal policy rate to

study the effects of supply and demand shocks associated with Covid-19. They demonstrate how these shocks are amplified or mitigated by nonlinearities, and quantify their effects using disaggregated data from the United States. Another paper which highlights the importance of nonlinearity is [Céspedes et al. \(2020\)](#). They build a threshold macroeconomic model of a pandemic and show how such a shock can have large magnification effects. Finally, [Milani \(2020\)](#) uses a GVAR model to underscore the importance of countries' interconnections in the evolution of Covid-19 and its unemployment effects.

Key challenges with the empirical economic analysis of Covid-19 include the following: how to identify the shock, how to account for its non-linear effects, and how to quantify its effects while accounting for spillovers, common global factors, network effects and uncertainty. This paper contributes to the literature by addressing these issues in a coherent multi-country framework. We offer an identification strategy for the Covid-19 shock considering that a synthetic control method cannot be applied in the context of a global pandemic. Specifically, we use the GDP growth revisions of the International Monetary Fund (IMF) in April and June 2020 compared to their end-2019 forecasts to identify the Covid-19 shock. We show that there exist threshold effects in the relationship between global financial market volatility and output growth at individual country levels in a significant majority of advanced economies and in the case of several emerging market countries. We develop a threshold-augmented dynamic multi-country model (TGVAR) to estimate the global as well as country-specific macroeconomic effects of the identified Covid-19 shock. We distinguish common global factors from trade network effects and account for sample uncertainty based on the constellation of disturbances that the global economy had experienced in the past four decades as well as their spillovers and interactions. Finally, we show how the model can be used for counterfactual analysis. This approach is very different from scenario analyses or forecasts that are unconditional statements and need not be model based.

We employ Generalized Impulse Response Functions (GIRFs) to study the counterfactual impact of the identified Covid-19 shock on the global economy as well as on the 33 individual countries in our sample. In linear models, GIRFs possess the following key features: (i) proportionality (namely, potential outcomes are linear in the size of the shock); (ii) state independence (that is, the effects of the shocks do not vary in recessions or expansions); and (iii) model invariance (namely, the underlying model is invariant to the shock under consideration). However, none of these features apply to non-linear dynamic models, which as argued *a priori* and established empirically, are more likely to be relevant for the analysis of large shocks, such as Covid-19. By using a threshold-augmented dynamic multi-country model (TGVAR), we are able to allow for (i) non-proportional impacts of large and small shocks; (ii) state-dependency; and (iii) more persistent outcomes. See [Koop et al. \(1996\)](#).

Standard GVAR modelling is designed to explicitly account for economic and financial



interdependencies across markets and countries, and was originally proposed by Pesaran et al. (2004) and further developed by Dees et al. (2007). It features elements of time series, panel data, and factor analysis, and is particularly useful in studying the international macroeconomic effects of various shocks. The standard GVAR model comprises 33 country/region-specific sub-models. These individual models are solved in a global setting where core macroeconomic variables of each economy are related to corresponding foreign variables (constructed exclusively to match the international trade pattern of the country under consideration) as well as global variables. This framework is able to account for various transmission channels, including trade relationships, as well as financial and commodity price linkages. This is important at the current juncture, as many countries face a multi-layered shock comprising a health emergency, domestic economic disruptions, plummeting external demand, tighter financial conditions, and a collapse in commodity prices.

The GVAR model has been used in a range of studies, such as stress testing of banks by the European Central Bank regulators, the analysis of China’s growing importance for the global economy (Cesa-Bianchi et al. 2012 and Cashin et al. (2016, 2017b)), the international macroeconomic transmission of weather shocks (Cashin et al. 2017a), the impact of commodity price shocks—see Mohaddes and Pesaran (2016, 2017) for the global macroeconomic consequences of country-specific oil-supply shocks and Cashin et al. (2014) and Mohaddes and Raissi (2019) for the differential effects of demand- and supply-driven commodity price shocks—, and other real and financial shocks—see, for instance, Cesa-Bianchi et al. (2020) and the GVAR handbook edited by di Mauro and Pesaran (2013) for empirical applications from 27 contributors—, as well as in forecasting—see Pesaran et al. (2009) and Bussière et al. (2012) for the earliest GVAR forecasting applications to the global economy. For an extensive survey of the latest theoretical developments in GVAR modelling and the numerous empirical analyses, see Chudik and Pesaran (2016) and Chapter 33 of Pesaran (2015).

Our counterfactual results show that the pandemic will likely reduce the world real GDP by 3 percent below its model-generated path without the shock by the end of 2021. While China and other emerging Asian economies are estimated to be less severely affected, the United States, the United Kingdom, and several other advanced economies may experience deeper and longer-lasting effects. Among non-Asian emerging market economies, however, the economic impact of Covid-19 varies substantially, depending on domestic factors (economic structures, health preparedness, and lockdowns) as well as external disturbances (plunging trade, collapsing tourism, capital outflows, falling commodity prices). There is a significant degree of uncertainty around all these counterfactual outcomes which we quantify based on the approach above. Importantly, our findings underscore the role of spillovers which we quantify for the case of Sweden considering its different approach toward the pandemic (i.e., a less stringent strategy). We show that no country is immune to the economic

fallout of the pandemic because of interconnections. We also estimate that the Covid-19 pandemic will likely lower long-term interest rates by about 100 basis points below their historical lows in core advanced economies. In contrast, the impact on long-term interest rates in emerging market economies has a wide range, including significant upside risks.

The rest of the paper is organized as follows. Section 2 highlights the importance of threshold effects in the growth–global volatility relationship. Section 3 develops the threshold-augmented dynamic multi-country (TGVAR) model. Section 4 quantifies the macroeconomic effects of Covid-19 under uncertainty using TGVAR. Finally, Section 5 offers some concluding remarks. Additional results are provided in three appendices.

## 2 Threshold Effects: Global Volatility and Growth

Threshold effects have been used in the literature primarily in the context of autoregressions pioneered by Tong (1990). These models are known as threshold autoregressions (TAR) and allow the parameters of the autoregressive model to switch between two or more values. Extension of TAR models to multi-variate systems has been considered by Tsay (1998). Hansen (2011) provides a recent review of TAR models, and discusses their empirical applications in economics in areas such as growth dynamics, stock return volatility and forecasting.

Given the global nature of Covid-19, and to capture its non-linear economic effects, we focus on a global measure of realized volatility, and consider its possible impact on country-specific output growth. To measure global volatility, we use the following

$$grve_t = \sum_{i=0}^n \tilde{w}_i rve_{it}, \quad (1)$$

where  $\tilde{w}_i$  is the PPP-GDP weight of country  $i$ , we index countries as  $i = 0, 1, \dots, n$ , and  $rve_{it}$  is the country-specific realized volatility of equity returns during quarter  $t$ , computed from daily observations:

$$rve_{it} = \sqrt{\sum_{\tau=1}^{D_t} [r_{it}(\tau) - \bar{r}_{it}]^2}, \quad (2)$$

where  $r_{it}(\tau)$  is the equity return during day  $\tau$  in quarter  $t$  in country  $i$ ,  $\bar{r}_{it} = D_t^{-1} \sum_{\tau=1}^{D_t} r_{it}(\tau)$ , and  $D_t$  is the number of trading days in quarter  $t$ . The country-specific realized volatility measures,  $rve_{it}$ , have been used in the literature to investigate the effects of uncertainty on growth. Here we focus on a global volatility measure, as opposed to country-specific ones, to better capture the effects of global uncertainty, which is more akin to Covid-19.

One could use other measures of global volatility as well. For example, instead of aver-

aging country-specific realized volatilities, we could first take the average of equity returns across countries and then compute the realized volatility of global equity. Let  $r_{gt}(\tau)$  be the global daily equity return defined by

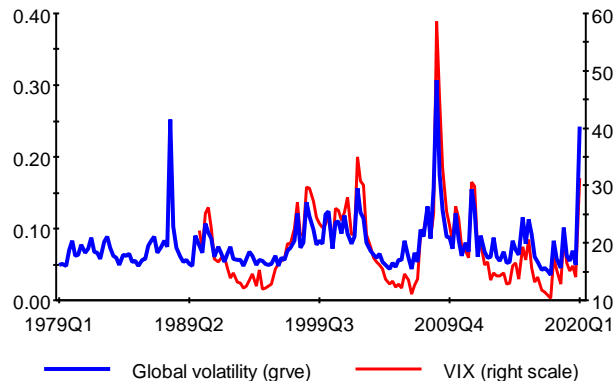
$$r_{gt}(\tau) = \sum_{i=0}^n \tilde{w}_i r_{it}(\tau),$$

using PPP-GDP weights as before. Then realized volatility of global equity returns is given by

$$rvge_t = \sqrt{\sum_{\tau=1}^{D_t} [r_{gt}(\tau) - \bar{r}_{gt}]^2}. \quad (3)$$

A widely-used alternative measure of global volatility in the literature is the option-implied volatility, or VIX. While the VIX captures the stock market's expectation of volatility based on S&P 500 index options and is only available from 1990, our preferred measure of global volatility,  $grve_t$ , is based on realized equity returns for a large number of countries and is available for the last four decades. Note that the correlation of  $grve_t$  and VIX is 89.8%, therefore,  $grve_t$  seems to follow the VIX index well but not too closely (see Figure 1), thus capturing, to some degree, some of the volatilities that originate from emerging economies. Appendix B systematically compares these three measures of global volatility and shows that  $grve_t$  is superior to other measures in terms of fit. Therefore, in what follows, we report the results based on the  $grve_t$  measure of global volatility.

**Figure 1: Covid-19 and Past Episodes of Heightened Stock Market Volatility, 1979Q1–2020Q1**



Notes: The global realized volatility of equity returns,  $grve_t$ , is aggregated using PPP-GDP weights. The correlation between the two variables is 0.90.

We begin our econometric analysis with the following simple multi-country threshold-

**Table 1: Estimates of Threshold Coefficient  $\varphi$ , Threshold Parameter  $\gamma$ , and AR(1) Coefficients in Threshold-augmented AR Specifications, 1979Q2–2019Q4**

(a) **Advanced economies:  $\hat{p}=3.09\%$  and  $\hat{\gamma}=0.156$**

	$\varphi$	t-ratio	$\rho$	t-ratio	$\bar{R}^2$	$\sigma^2$
Australia	-0.0059 <sup>†</sup>	-1.88	0.26 <sup>‡</sup>	3.48	7.8%	0.0069
Austria	-0.0208 <sup>‡</sup>	-5.10	-0.17 <sup>†</sup>	-2.28	13.5%	0.0087
Belgium	-0.0079 <sup>‡</sup>	-2.54	0.22 <sup>‡</sup>	2.86	9.6%	0.0066
Canada	-0.0071 <sup>‡</sup>	-2.50	0.48 <sup>‡</sup>	7.10	28.1%	0.0061
Finland	-0.0203 <sup>‡</sup>	-3.37	0.02	0.23	6.1%	0.0129
France	-0.0064 <sup>‡</sup>	-2.99	0.31 <sup>‡</sup>	4.01	17.5%	0.0045
Germany	-0.0174 <sup>‡</sup>	-4.35	-0.03	-0.37	10.0%	0.0084
Italy	-0.0076 <sup>‡</sup>	-2.51	0.31 <sup>‡</sup>	4.16	16.8%	0.0063
Japan	-0.0083 <sup>†</sup>	-1.86	0.21 <sup>†</sup>	2.55	6.8%	0.0095
Korea	-0.0030	-0.40	0.02	0.22	-1.1%	0.0163
Netherlands	-0.0128 <sup>‡</sup>	-3.99	0.17 <sup>†</sup>	2.23	13.6%	0.0069
Norway	-0.0133 <sup>‡</sup>	-2.44	-0.29 <sup>‡</sup>	-4.00	10.4%	0.0120
New Zealand	-0.0029	-0.74	0.20 <sup>‡</sup>	2.60	3.4%	0.0086
Singapore	-0.0107 <sup>*</sup>	-1.32	0.23 <sup>‡</sup>	2.98	6.5%	0.0174
Spain	-0.0035 <sup>†</sup>	-2.14	0.76 <sup>‡</sup>	14.99	62.4%	0.0034
Sweden	-0.0247 <sup>‡</sup>	-4.64	-0.35 <sup>‡</sup>	-4.62	16.3%	0.0112
Switzerland	-0.0095 <sup>‡</sup>	-2.74	0.17 <sup>†</sup>	2.18	8.3%	0.0073
United Kingdom	-0.0047 <sup>*</sup>	-1.51	0.30 <sup>‡</sup>	4.07	12.4%	0.0066
United States	-0.0096 <sup>‡</sup>	-3.29	0.33 <sup>‡</sup>	4.55	19.9%	0.0062
MG (equally weighted)	-0.0103 <sup>‡</sup>	-6.60	0.17 <sup>‡</sup>	2.76		
MG (PPP-GDP weighted)	-0.0092 <sup>‡</sup>	-6.27	0.26 <sup>‡</sup>	4.47		

(b) **Emerging economies:  $\hat{p}=4.94\%$  and  $\hat{\gamma}=0.129$**

	$\varphi$	t-ratio	$\rho$	t-ratio	$\bar{R}^2$	$\sigma^2$
Argentina	-0.0061	-0.93	0.53 <sup>‡</sup>	7.78	27.2%	0.0180
Brazil	-0.0082 <sup>*</sup>	-1.36	0.22 <sup>‡</sup>	2.93	5.5%	0.0166
Chile	-0.0065	-0.95	0.26 <sup>‡</sup>	3.25	6.0%	0.0187
China	0.0035	0.88	0.32 <sup>‡</sup>	4.17	9.0%	0.0110
India	-0.0071	-1.12	-0.24 <sup>‡</sup>	-3.04	4.5%	0.0171
Indonesia	-0.0093 <sup>*</sup>	-1.32	0.01	0.12	-0.1%	0.0195
Malaysia	-0.0074 <sup>*</sup>	-1.44	0.31 <sup>‡</sup>	4.03	11.7%	0.0137
Mexico	-0.0156 <sup>‡</sup>	-3.09	0.14 <sup>*</sup>	1.85	7.9%	0.0137
Peru	-0.0189 <sup>†</sup>	-2.01	0.37 <sup>‡</sup>	5.04	14.5%	0.0258
Philippines	0.0034	0.64	0.16 <sup>†</sup>	2.03	1.3%	0.0143
South Africa	-0.0018	-0.71	0.54 <sup>‡</sup>	8.09	29.1%	0.0068
Saudi Arabia	0.0075	1.32	0.61 <sup>‡</sup>	9.94	38.2%	0.0157
Thailand	-0.0263 <sup>‡</sup>	-3.60	0.01	0.13	6.6%	0.0199
Turkey	-0.0294 <sup>‡</sup>	-3.27	-0.02	-0.27	5.2%	0.0247
MG (equally weighted)	-0.0087 <sup>‡</sup>	-2.99	0.23 <sup>‡</sup>	3.53		
MG (PPP-GDP weighted)	-0.0038	-1.02	0.18	1.58		

Notes: Our threshold-augmented dynamic output growth model is given by  $\Delta y_{it} = c_i + \rho_i \Delta y_{it-1} + \varphi_i z_{t-1}(\gamma) + e_{it}$ , where  $\Delta y_{it}$  is the first difference of the logarithm of real GDP in country  $i$  during quarter  $t$  and  $z_t = I(grve_t > \gamma)$ .  $I(\mathcal{A})$  is an indicator variable that takes the value of unity if event  $\mathcal{A}$  occurs and zero otherwise.  $grve_t$  is a measure of global volatility defined by (1), and  $\gamma$  is the threshold parameter. The estimation sample is 1979Q2 to 2019Q4. Statistical significance is denoted by \*, <sup>†</sup> and <sup>‡</sup>, at 10%, 5% and 1% levels, respectively.

augmented dynamic output growth model:

$$\begin{aligned}\Delta y_{it} &= c_i + \rho_i \Delta y_{it-1} + \varphi_i z_{t-1}(\gamma) + e_{it}, \\ \text{for } i &= 0, 1, 2, \dots, n, \text{ and } t = 1, 2, \dots, T,\end{aligned}\tag{4}$$

where  $\Delta y_{it} = y_{it} - y_{i,t-1}$ , is the first difference of the logarithm of real GDP for country  $i$  during quarter  $t$ , and  $z_t = I(\text{grve}_t > \gamma)$  is the global volatility threshold variable,  $I(\mathcal{A})$  is an indicator variable that takes the value of unity if event  $\mathcal{A}$  occurs and zero otherwise,  $\text{grve}_t$  is the global realized volatility defined by (1), and  $\gamma$  is a threshold parameter, assumed to be the same across countries under consideration.  $e_{it}$  is the idiosyncratic error assumed to be serially uncorrelated with a zero mean.

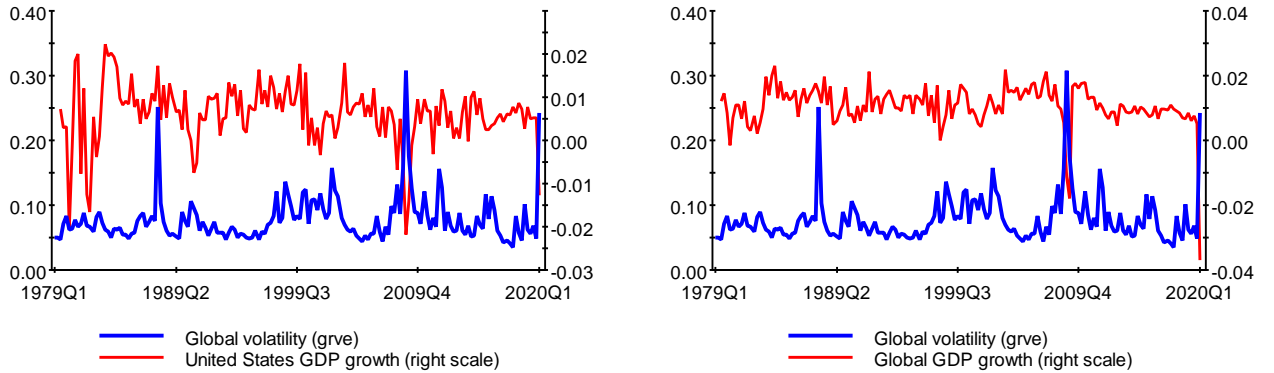
The above specification only allows for intercept shifts in output growth equations, thus treating the threshold variable,  $z_{t-1}(\gamma)$ , as another common factor, with the threshold parameter estimated by pooling across countries. Modelling other forms of threshold effects, including country-specific thresholds, will unduly complicate the modelling exercise and is beyond the scope of the present paper. We model the threshold effects with respect to lagged values of the realized volatility variable, and rely on standard common factor analysis to capture possible simultaneity between output growths and volatility. See Section 3.

The results of estimating equation (4) for advanced and emerging economies are summarized in Table 1. In addition to reporting the estimates of  $\gamma$  and  $\varphi_i$ , we also report the estimate of the proportion of times that the threshold is exceeded, denoted by  $p$ . The threshold parameter,  $\gamma$ , is estimated by grid search and is allowed to take different values for advanced and emerging economies. The estimate of  $\gamma$  for advanced economies at 0.156 is slightly larger than the value of 0.129 estimated for emerging economies. Given these estimates, the global volatility threshold variable is statistically significant in 15 out of the 19 (80%) advanced economies in our sample. But the results are much weaker for emerging economies, with only 4 statistically significant effects out of the 14 emerging economies in our sample. Nevertheless, all statistically significant threshold affects were negative, suggesting that excessive global volatility is generally associated with lower output growth subsequently. There are a numbers of channels through which excessive global financial market volatility can adversely affect economic growth. They include higher precautionary savings by households, lower or delayed investment by firms due to increased uncertainty and weaker demand prospects, and a higher cost of raising capital owing to higher funding costs in a volatile environment. See, for example, Cesa-Bianchi et al. (2020) and the references therein. In normal conditions where global volatility is low (below the threshold  $\gamma$ ), financial markets are able to price the volatility risk, and therefore weaken the relationship between output growth and the volatility factor. But during periods of heightened volatility, that occur very rarely, it is

difficult to price the volatility risk properly and it is thus more likely for excess volatility to show up as statistically significant in output growth equations.

Overall, while we manage to detect threshold effects in the output growth–global volatility relationship in many advanced economies (80 percent of cases), similar results for emerging markets are less pervasive (with threshold effects being statistically significant in 30 percent of cases) for the following reason. Compared to advanced countries, exposure to global equity markets is lower in emerging market economies (that is, they have less developed capital markets and rely more on the banking sector for credit intermediation). Nonetheless, in these countries output growth could well be non-linearly affected by localized events (e.g., natural disasters; banking, currency and sovereign crises) or external shocks (e.g., commodity price volatility and capital flow reversals), and be exacerbated by country-specific characteristics (internal and external imbalances). However, these types of threshold effects will not be captured by our econometric specification that focuses on the global realized volatility of equity returns that is more reflective of developments in advanced economies.<sup>1</sup>

**Figure 2: Global Volatility and GDP Growth, 1979Q2–2020Q1**



Notes: Global realized volatility of equity returns,  $grve_t$ , and global GDP growth are both aggregated using PPP-GDP weights.

The above findings underscore the importance of allowing for threshold effects in studying the macroeconomic consequences of Covid-19—which, considering its unprecedented nature, generated a sharp tightening in global financial conditions (Figure 1). Specifically, global equity markets sold off sharply through mid-March as the pandemic spread across the world. From end-2019 to trough, the S&P 500 index in the United States fell 30 percent. Stock prices in other major economies experienced declines of similar magnitude and flight to

<sup>1</sup>As a robustness check, we are able to detect the presence of threshold effects in a larger number of economies if we start the sample from 1990Q1. See Appendix B for the estimation results and other details.

safety resulted in sharp capital outflows from emerging market economies. Notwithstanding the improvement in global risk sentiment since March amid large-scale liquidity injections by major central banks and a gradual relaxation of lockdowns in many countries, output recovery is expected to be gradual with GDP growth in many economies expected to be negatively affected by the previous bout of financial market volatility (Figure 2).

### 3 A Threshold Augmented GVAR (TGVAR) Model with Global Latent Factors

In what follows, we study the implications of Covid-19 for the global economy. In doing so we build on the GVAR literature and develop a threshold-augmented dynamic multi-country framework, which we refer to as Threshold-augmented GVAR, or TGVAR for short. The proposed modelling framework takes into account both the temporal and cross-sectional dimensions of the data; real and financial drivers of economic activity; interlinkages and spillovers that exist between different regions/countries; and the global common factors, as well as network effects (e.g., through trade linkages). This is crucial as the impact of shocks (and importantly that of Covid-19) cannot be reduced to a single country but rather involves multiple regions/countries, and this impact may be amplified or dampened depending on the degree of openness of the countries (both trade and financial) and their economic structures. Informed by the results in Section 2, we also allow for threshold effects in the output growth equation arising from global financial market volatility. Moreover, in contrast to the standard GVAR models that rely on trade-weighted averages to capture both local and global effects, we treat these effects separately. Before describing our model specification, we provide a short exposition of the methodology and data.

#### 3.1 Data and Variables

We consider a world economy composed of  $n + 1$  interconnected countries. Our focus is to model output growth and its responses to common shocks, either directly or indirectly through equity and bond markets. Specifically, for each economy  $i$ , we include the logarithm of real GDP ( $gdp_{it}$ ), nominal long-term interest rate ( $lr_{it}$ ), the logarithm of real equity prices ( $eq_{it}$ ), and the logarithm of the real exchange rate (the nominal exchange rate deflated by the consumer price index),  $ep_{it}$ . Data on these variables are obtained from the updated GVAR data set which includes 33 countries and covers the period 1979Q2 to 2019Q4. For a detailed description of data sources and related transformations see [Mohaddes and Raissi \(2020\)](#).

To avoid highly persistent variables we work with first-differences and denote the endoge-

nous country-specific variables by

$$\mathbf{y}_{it} = (\Delta gdp_{it}, \Delta lr_{it}, \Delta eq_{it}, \Delta ep_{it})'. \quad (5)$$

The U.S. economy is denoted by  $i = 0$ , with the remaining economies indexed by  $i = 1, 2, \dots, n$ , in no particular order. For estimation we suppose that  $\mathbf{y}_{it}$  is available over the period  $t = 1, 2, \dots, T$ , although the bond and equity variables,  $\Delta lr_{it}$  and  $\Delta eq_{it}$ , are not available for some of the countries in our dataset. Therefore, the dimension of  $\mathbf{y}_{it}$ , which we denote by  $k_i$ , differs across countries. Let  $k = \sum_{i=0}^n k_i$ , and collect all country-specific variables in a single  $k \times 1$  vector  $\mathbf{y}_t = (\mathbf{y}'_{0t}, \mathbf{y}'_{1t}, \mathbf{y}'_{2t}, \dots, \mathbf{y}'_{nt})'$ .

Given the focus of our analysis, we augment the standard GVAR model with observed and unobserved external common factors. We consider changes in log oil prices,  $\Delta poil_t$ , and global volatility,  $grve_t$ , as common observed factors and include them in the  $2 \times 1$  vector

$$\mathbf{g}_t = (\Delta poil_t, grve_t)'. \quad (6)$$

In addition, we use the weighted cross-sectional averages of the following four variables to capture unobserved common factors:

$$\tilde{\mathbf{y}}_t = \left( \widetilde{\Delta gdp}_t, \widetilde{\Delta lr}_t, \widetilde{\Delta eq}_t, \widetilde{\Delta ep}_t \right)', \quad (7)$$

where  $\widetilde{gdp}_t = \sum_{i=0}^n \tilde{w}_i gdp_{it}$ ,  $\tilde{w}_i$  is the PPP-GDP weight of country  $i$ , and similarly  $\widetilde{lr}_t = \sum_{i=0}^n \tilde{w}_i lr_{it}$ ,  $\widetilde{eq}_t = \sum_{i=0}^n \tilde{w}_i eq_{it}$ , and  $\widetilde{ep}_t = \sum_{i=0}^n \tilde{w}_i ep_{it}$ . One could also apply the principal component analysis (PCA) to  $\mathbf{y}_t$ , but that would involve estimating the number of common factors and deciding whether the PCA is applied to different components of  $\mathbf{y}_{it}$  separately or to all of its four components together. The weighted cross section averages,  $\widetilde{\Delta gdp}_t, \widetilde{\Delta lr}_t, \widetilde{\Delta eq}_t$ , and  $\widetilde{\Delta ep}_t$ , are likely to be closely correlated with the first principal component of  $\Delta gdp_{it}, \Delta lr_{it}, \Delta eq_{it}$ , and  $\Delta ep_{it}$ , for  $i = 0, 1, \dots, n$ , respectively.

To link the global aggregates to the country-specific variables, we introduce a  $k \times k$  weights matrix,  $\tilde{\mathbf{W}}$ , and define it such that

$$\tilde{\mathbf{y}}_t = \tilde{\mathbf{W}} \mathbf{y}_t. \quad (8)$$

In addition to global aggregates, we also allow for transmission of shocks through the trade channel and consider country-specific trade-weighted averages

$$\mathbf{y}_{it}^* = (\Delta gdp_{it}^*, \Delta lr_{it}^*, \Delta eq_{it}^*, \Delta ep_{it}^*)', \quad (9)$$



where  $\Delta gdp_{it}^* = \sum_{j=1}^n w_{ij} gdp_{it}$ ,  $\{w_{ij}\}$  are the trade weights,  $j = 0, 1, \dots, n$ ,  $w_{ii} = 0$ , and  $\sum_{j=0}^n w_{ij} = 1$ . For empirical application, the trade weights are computed as three-year averages:

$$w_{ij} = \frac{T_{ij,2014} + T_{ij,2015} + T_{ij,2016}}{T_{i,2014} + T_{i,2015} + T_{i,2016}}, \quad (10)$$

where  $T_{ijt}$  is the bilateral trade of country  $i$  with country  $j$  during a given year  $t$  and is calculated as the average of exports and imports of country  $i$  with  $j$ , and  $T_{it} = \sum_{j=0}^n T_{ijt}$  (the total trade of country  $i$ ) for  $t = 2014, 2015$  and  $2016$ , in the case of all countries. A similar procedure is followed for the construction of  $\Delta lr_{it}^*$ ,  $\Delta eq_{it}^*$ , and  $\Delta ep_{it}^*$ . As it is well known in the GVAR literature, the country-specific aggregates  $\mathbf{y}_{it}^*$  relate to  $\mathbf{y}_t$  through the following links

$$\mathbf{y}_{it}^* = \mathbf{W}_i \mathbf{y}_t, \text{ for } i = 0, 1, \dots, n,$$

where  $\mathbf{W}_i$  is the  $k_i \times k$  matrix of trade weights for country  $i$ .

The main difference between the two sets of aggregates,  $\tilde{\mathbf{y}}_t$  and  $\mathbf{y}_{it}^*$ , for  $i = 0, 1, \dots, n$ , is the weights used in their construction. These two variables are likely to be highly correlated contemporaneously. The reason for considering both aggregates (cross-section averages) is to distinguish the effects of global factors from local (trade related) effects, captured by country-specific trade linkages. Also to avoid multi-collinearity and related identification problems, we include only lagged country-specific cross-section averages,  $y_{i,t-1}^*$ , and rely on global cross-section averages,  $\tilde{\mathbf{y}}_t$ , to capture contemporaneous effects of global factors.

### 3.2 Global and Individual Country Specifications

We specify the following equations for  $\mathbf{g}_t$  and  $\tilde{\mathbf{y}}_t$

$$\mathbf{g}_t = \mathbf{c}_g + \Theta_g \mathbf{g}_{t-1} + \Theta_{gy} \tilde{\mathbf{y}}_{t-1} + \mathbf{v}_{gt}, \quad (11)$$

and

$$\tilde{\mathbf{y}}_t = \mathbf{c}_{\tilde{y}} + \Theta_{yg} \mathbf{g}_{t-1} + \Theta_y \tilde{\mathbf{y}}_{t-1} + \mathbf{v}_{\tilde{y}t}. \quad (12)$$

Let  $\mathbf{f}_t = (\mathbf{g}_t', \tilde{\mathbf{y}}_t')'$ , and write (11)–(12) as

$$\mathbf{f}_t = \mathbf{c}_f + \Theta \mathbf{f}_{t-1} + \mathbf{v}_t, \quad (13)$$

where  $\mathbf{c}_f = (\mathbf{c}_g', \mathbf{c}_{\tilde{y}}')'$ , and  $\mathbf{v}_t = (\mathbf{v}_{gt}', \mathbf{v}_{\tilde{y}t}')'$  is the vector of reduced form global shocks, with

$$\Theta = \begin{pmatrix} \Theta_g & \Theta_{gy} \\ \Theta_{yg} & \Theta_y \end{pmatrix}.$$

We consider the following country-specific threshold-augmented models:

$$\mathbf{y}_{it} = \mathbf{c}_{y,i} + \Phi_i \mathbf{y}_{i,t-1} + \mathbf{B}_i \mathbf{y}_{i,t-1}^* + \mathbf{A}_{0,i} \mathbf{f}_t + \mathbf{A}_{1,i} \mathbf{f}_{t-1} + \lambda_i z_{t-1}(\gamma_i) + \mathbf{u}_{it}, \quad (14)$$

for  $i = 0, 1, \dots, n$ , where the threshold indicator,  $z_{t-1}(\gamma_i)$ , is defined by

$$z_{t-1}(\gamma_i) = I[(0, 1)' \mathbf{g}_{t-1} > \gamma_i] = I(\text{grve}_{t-1} > \gamma_i). \quad (15)$$

We allow the country-specific error vectors,  $\mathbf{u}_{it}$ , to be cross-sectionally weakly correlated, and do not attempt to parametrize this correlation. Therefore, contemporaneous values of  $\mathbf{y}_{it}^*$  are not included in (14). Including non-granular (local) cross-section average of dependent variables—also known as spatial lags—on the right side of (14) is common in the spatial literature, where the contemporaneous correlation (after controlling for lags and common factors) is fully parametrized by introducing contemporaneous spatial lags, which, if specified correctly, would then identify geographical origins of the shocks. It is important to highlight that including non-granular contemporaneous cross-section averages of the dependent variable in (14), would result in inconsistent least squares estimation, due to correlation between  $\mathbf{u}_{it}$  and the non-granular cross-sectional averages (spatial lags) even when  $n$  is large, and a full maximum likelihood or GMM type estimation will be required.

Equations (11) and (12) are specifications for global variables and global aggregates. Equation (14), for  $i = 0, 1, \dots, n$ , relates to country specific models. Equation (15) links the threshold indicator with the vector of global variables. Moreover, we have two additional linking equations. Equation (8) links global aggregates  $\tilde{\mathbf{y}}_t$  with  $\mathbf{y}_t$ , and

$$\mathbf{y}_t^* = \mathbf{W} \mathbf{y}_t, \quad (16)$$

links the vector of country-specific trade-weighted averages  $\mathbf{y}_t^* = (\mathbf{y}_{0,t}^*, \mathbf{y}_{1,t}^*, \mathbf{y}_{2,t}^*, \dots, \mathbf{y}_{n,t}^*)'$  to the full  $k \times 1$  vector of endogenous variables,  $\mathbf{y}_t$ , and  $\mathbf{W} = (\mathbf{W}'_0, \mathbf{W}'_1, \dots, \mathbf{W}'_n)'$  is the  $k^* \times k$  matrix of pre-determined weights.

### 3.3 The TGVAR Representation

Substituting (13) for  $\mathbf{f}_t$  in (14), we obtain

$$\mathbf{y}_{it} = \mathbf{d}_i + \Phi_i \mathbf{y}_{i,t-1} + \mathbf{B}_{y,i} \mathbf{y}_{i,t-1}^* + \mathbf{B}_{f,i} \mathbf{f}_{t-1} + \lambda_{y,i} z_{t-1}(\gamma_i) + \mathbf{A}_{0,i} \mathbf{v}_t + \mathbf{u}_{it}, \quad (17)$$

where  $\mathbf{B}_{f,i} = \mathbf{A}_{1,i} + \mathbf{A}_{0,i} \Theta$ , and  $\mathbf{d}_i = \mathbf{c}_{y,i} + \mathbf{A}_{0,i} \mathbf{c}_f$ . Note that the substitution of the global model (13) for  $\mathbf{f}_t$  in the country-specific models (14) avoids the possibility of the rank-deficiency problem discussed in Section 4.1 of Chudik et al. (2016). In addition,

it allows for an error structure that explicitly features common and idiosyncratic shocks. Our approach differs from the earlier GVAR models in the literature that only rely on the conditional country-specific equations in (14) and the marginal equation for the observed common variables  $\mathbf{g}_t$  in (11). In contrast, (17) utilizes the equation (12) for  $\tilde{\mathbf{y}}_t$  as well. This approach is also adopted by Cesa-Bianchi et al. (2020) and Chudik et al. (2020).

Stacking (17) for  $i = 0, 1, 2, \dots, n$ , we obtain

$$\mathbf{y}_t = \mathbf{d} + \Phi \mathbf{y}_{t-1} + \mathbf{B}_y \mathbf{y}_{t-1}^* + \mathbf{B}_f \mathbf{f}_{t-1} + \Lambda_y \mathbf{z}_{t-1}(\gamma) + \mathbf{A}_0 \mathbf{v}_t + \mathbf{u}_t, \quad (18)$$

where  $\mathbf{d} = (\mathbf{d}'_0, \mathbf{d}'_1, \dots, \mathbf{d}'_n)'$ ,

$$\Phi = \begin{pmatrix} \Phi_0 & \mathbf{0} & \dots & \mathbf{0} \\ \mathbf{0} & \Phi_1 & & \\ \vdots & & \ddots & \\ \mathbf{0} & \mathbf{0} & & \Phi_n \end{pmatrix},$$

$$\mathbf{B}_y = \begin{pmatrix} \mathbf{B}_{y,0} & \mathbf{0} & \dots & \mathbf{0} \\ \mathbf{0} & \mathbf{B}_{y,1} & & \mathbf{0} \\ \vdots & & \ddots & \\ \mathbf{0} & \mathbf{0} & & \mathbf{B}_{y,n} \end{pmatrix}, \mathbf{B}_f = \begin{pmatrix} \mathbf{B}_{f,0} \\ \mathbf{B}_{f,1} \\ \vdots \\ \mathbf{B}_{f,n} \end{pmatrix}, \mathbf{A}_0 = \begin{pmatrix} \mathbf{A}_{0,0} \\ \mathbf{A}_{0,1} \\ \vdots \\ \mathbf{A}_{0,n} \end{pmatrix},$$

$\mathbf{z}_{t-1}(\gamma) = [z_{t-1}(\gamma_1), z_{t-1}(\gamma_2), \dots, z_{t-1}(\gamma_n)]'$  is an  $(n+1) \times 1$  vector of threshold indicators, and

$$\Lambda_y = \begin{pmatrix} \lambda_{y,0} & \mathbf{0} & \dots & \mathbf{0} \\ \mathbf{0} & \lambda_{y,1} & & \mathbf{0} \\ \vdots & & \ddots & \\ \mathbf{0} & \mathbf{0} & & \lambda_{y,n} \end{pmatrix}.$$

Substituting identity (16) for  $\mathbf{y}_{t-1}^*$  in (18), we have

$$\mathbf{y}_t = \mathbf{d} + (\Phi + \mathbf{B}_y \mathbf{W}) \mathbf{y}_{t-1} + \mathbf{B}_f \mathbf{f}_{t-1} + \Lambda_y \mathbf{z}_{t-1}(\gamma) + \mathbf{A}_0 \mathbf{v}_t + \mathbf{u}_t,$$

Partitioning

$$\mathbf{B}_f \mathbf{f}_{t-1} = (\mathbf{B}_g, \mathbf{B}_{\tilde{y}}) \begin{pmatrix} \mathbf{g}_{t-1} \\ \tilde{\mathbf{y}}_{t-1} \end{pmatrix},$$

and substituting (8) for  $\tilde{\mathbf{y}}_t$ , we obtain

$$\mathbf{y}_t = \mathbf{c}_y + \left( \Phi + \mathbf{B}_y \mathbf{W} + \mathbf{B}_{\tilde{y}} \tilde{\mathbf{W}} \right) \mathbf{y}_{t-1} + \mathbf{B}_g \mathbf{g}_{t-1} + \Lambda_y \mathbf{z}_{t-1}(\gamma) + \mathbf{A}_0 \mathbf{v}_t + \mathbf{u}_t, \quad (19)$$

Substituting identity (8) for  $\tilde{\mathbf{y}}_{t-1}$  in equations for  $\mathbf{g}_t$  in (11), we have

$$\mathbf{g}_t = \mathbf{c}_g + \Theta_g \mathbf{g}_{t-1} + \Theta_{gy} \tilde{\mathbf{W}} \mathbf{y}_{t-1} + \mathbf{v}_{gt}, \quad (20)$$

Stacking (19) and (20), we obtain the following TGVAR representation for the full set of observables, the  $(k+2) \times 1$  vector  $\mathbf{x}_t = (\mathbf{y}'_t, \mathbf{g}'_t)'$ ,

$$\mathbf{x}_t = \mathbf{c} + \mathbf{G} \mathbf{x}_{t-1} + \mathbf{\Lambda} \mathbf{z}_{t-1}(\gamma) + \mathbf{e}_t, \quad (21)$$

where

$$\mathbf{c} = \begin{pmatrix} \mathbf{d} \\ \mathbf{c}_g \end{pmatrix}, \mathbf{G} = \begin{pmatrix} \Phi + \mathbf{B}_y \mathbf{W} + \mathbf{B}_{\tilde{y}} \tilde{\mathbf{W}} & \mathbf{B}_g \\ \Theta_{gy} \tilde{\mathbf{W}} & \Theta_g \end{pmatrix}, \mathbf{\Lambda} = \begin{pmatrix} \mathbf{\Lambda}_y \\ \mathbf{0}_{2 \times (n+1)} \end{pmatrix}. \quad (22)$$

Also

$$\mathbf{e}_t = \mathbf{\Gamma} \mathbf{v}_t + \boldsymbol{\varepsilon}_t, \quad (23)$$

where  $\mathbf{v}_t = (\mathbf{v}'_{gt}, \mathbf{v}'_{\tilde{y}t})'$ ,

$$\mathbf{\Gamma} = \begin{pmatrix} \mathbf{A}_g & \mathbf{A}_{\tilde{y}} \\ \mathbf{I}_4 & \mathbf{0} \end{pmatrix}, \text{ and } \boldsymbol{\varepsilon}_t = \begin{pmatrix} \mathbf{u}_t \\ \mathbf{0}_{4 \times 1} \end{pmatrix}. \quad (24)$$

$\mathbf{e}_t$  is a vector of reduced form shocks, composed of global ( $\mathbf{v}_t$ ) and idiosyncratic shocks ( $\boldsymbol{\varepsilon}_t$ ).

Given our focus on the output effects of the Covid-19 shock, and to keep the analyses empirically manageable, we consider the effects of the threshold variable on the output growth variables only, and accordingly set  $\boldsymbol{\lambda}_{y,i} = (\lambda_{\Delta gdp,i}, 0, 0, 0)'$ . Without loss of generality, we identify advanced economies by  $i = 0, 1, \dots, n_a$  and the emerging market countries by  $i = n_a + 1, n_a + 2, \dots, n$ . Moreover, currently available time series observations do not allow for the estimation of country-specific threshold effects which capture rare events. Thus, we can only estimate two threshold parameters, distinguishing between advanced and emerging economies:

$$\gamma_i = \begin{cases} \gamma_{adv} & \text{for } i = 0, 1, \dots, n_a \\ \gamma_{eme} & \text{for } i = n_a + 1, n_a + 2, \dots, n \end{cases}. \quad (25)$$

Thresholds  $\gamma_{adv}$  and  $\gamma_{eme}$  are estimated by a grid-search method outlined in Appendix A. We excluded the threshold indicator from a few countries, where  $\hat{\lambda}_{\Delta gdp,i} > 0$ .

Finally, given the dominant role played by U.S. in the global financial markets, we exclude  $\Delta \tilde{r}_t, \Delta \tilde{q}_t$ , and  $\Delta \tilde{p}_t$  from the U.S. model by restricting the corresponding rows of the coefficient matrices  $\mathbf{A}_{0,0}$  and  $\mathbf{B}_{f,0}$  to zero vectors.

### 3.4 Identification of the Covid-19 Shock

Identifying the economic effects of Covid-19 is not a straightforward task as our historical sample is not informative about such a shock. Also considering the truly global nature of the pandemic, it is not possible to compare economic outcomes from countries affected by Covid-19 with a control group that has not been buffeted by the Covid-19 shock. At best, we could compare economic outcomes across countries that followed different strategies to mitigate the spread of the pandemic. This approach is also limited as most countries have followed very similar approaches (for example, lockdowns) with just a few exceptions (such as Sweden which we consider below), and they differ mainly in terms of the timing of the implemented social distancing policies (for example, Germany and the United Kingdom). Here we adopt a historical country-specific approach and identify the Covid-19 shock by comparing the IMF's GDP forecasts for Q1 to Q4 of 2020 formed at the end of 2019—before the spread of the pandemic and when no one (including the IMF) could have predicted the global economic disruption that was brought about by the pandemic—to the same forecasts prepared in April 2020. We attribute the IMF's GDP forecast revisions in 2020Q1 to the Covid-19 shock. In effect, we assume that the short-term IMF forecasts at the end of 2019 were free from systemic bias and can be used as potential outcomes in the absence of the Covid-19 shock. We believe this is a reasonable identifying assumption, in view of the unprecedented nature of the Covid-19 pandemic. Accordingly, we assume that up to 2019Q4 ( $t = 1, 2, \dots, T$ ),  $\mathbf{e}_t$  is given by (23), but for Q1 to Q4 of 2020, it is given by

$$\mathbf{e}_{T+q} = \boldsymbol{\omega}_{T+q} + \mathbf{\Gamma}\mathbf{v}_{T+q} + \boldsymbol{\varepsilon}_{T+q}, \text{ for } q = 1, 2, 3, 4, \quad (26)$$

where  $\boldsymbol{\omega}_{T+q}$  corresponds to the Covid-19 shock in the period  $T + q$ . We assume  $\boldsymbol{\omega}_t = 0$  for  $t \leq T$ , but it is nonzero for  $t = T + 1, T + 2, T + 3, T + 4$ . To identify  $\boldsymbol{\omega}_{T+q}$  we will use the size of IMF's forecast revisions at the end 2020Q1.

Let  $\Delta gdp_{i,T+q}^{April}$  be the April 2020 IMF World Economic Outlook (WEO) GDP growth forecasts for country  $i$  in quarters  $q = 1, 2, 3, 4$  of 2020, and  $\Delta gdp_{i,T+q}^{Jan}$  be the associated January 2020 IMF WEO forecasts. We compute the April-January forecast revisions as

$$\kappa_{i,q} = \Delta gdp_{i,T+q}^{April} - \Delta gdp_{i,T+q}^{Jan}, \text{ for } q = 1, 2, 3, 4,$$

and  $i = 0, 1, 2, \dots, n$ . Assuming that developments surrounding Covid-19 were the only dominant developments behind the forecast revisions, we use  $\boldsymbol{\kappa}_q = (\kappa_{1,q}, \kappa_{2,q}, \dots, \kappa_{n,q})'$ , for  $q = 1, 2, 3, 4$  to infer  $\boldsymbol{\omega}_{T+q}$ .

### 3.4.1 Using IMF Forecasts to Infer $\omega_{T+q}$

Let us define  $\mathbf{S}$  as the matrix that selects all output growth variables from the vector  $\mathbf{x}_t$ , namely

$$\mathbf{S}\mathbf{x}_t = \Delta\mathbf{gdp}_t = (\Delta gdp_{0t}, \Delta gdp_{1t}, \dots, \Delta gdp_{nt})'.$$

We set individual elements of  $\omega_{T+1}$  that correspond to GDP to be given by the corresponding  $\kappa_{i,1}$ , and use the historical correlations of the reduced form errors to estimate the remaining elements. This yields

$$\hat{\omega}_{T+1} = \hat{\mathbf{D}}_e \boldsymbol{\kappa}_1, \quad (27)$$

where  $\hat{\mathbf{D}}_e = \hat{\boldsymbol{\Sigma}}_e \mathbf{S}' (\mathbf{S} \hat{\boldsymbol{\Sigma}}_e \mathbf{S}')^{-1}$ , in which  $\hat{\boldsymbol{\Sigma}}_e$  is the estimate of  $\boldsymbol{\Sigma}_e = \boldsymbol{\Gamma} \boldsymbol{\Sigma}_v \boldsymbol{\Gamma}' + \boldsymbol{\Sigma}_\varepsilon$ ,  $\boldsymbol{\Sigma}_v = E(\mathbf{v}_t \mathbf{v}_t')$  and  $\boldsymbol{\Sigma}_\varepsilon = E(\boldsymbol{\varepsilon}_t \boldsymbol{\varepsilon}_t')$ . The innovations,  $\hat{\omega}_{T+q}$  for  $q = 2, 3, 4$  are computed recursively as

$$\begin{aligned} \hat{\omega}_{T+2} &= \hat{\mathbf{D}}_e \left( \boldsymbol{\kappa}_2 - \mathbf{S} \hat{\mathbf{G}} \hat{\omega}_{T+1} \right) \\ \hat{\omega}_{T+3} &= \hat{\mathbf{D}}_e \left( \boldsymbol{\kappa}_3 - \mathbf{S} \hat{\mathbf{G}} \hat{\omega}_{T+2} - \mathbf{S} \hat{\mathbf{G}}^2 \hat{\omega}_{T+1} \right) \\ \hat{\omega}_{T+4} &= \hat{\mathbf{D}}_e \left( \boldsymbol{\kappa}_4 - \mathbf{S} \hat{\mathbf{G}} \hat{\omega}_{T+3} - \mathbf{S} \hat{\mathbf{G}}^2 \hat{\omega}_{T+2} - \mathbf{S} \hat{\mathbf{G}}^3 \hat{\omega}_{T+1} \right). \end{aligned} \quad (28)$$

We define the Covid-19 effects by the difference

$$\boldsymbol{\eta}^c(T, h) = \mathbf{x}_{T+h}^c - \mathbf{x}_{T+h}^0, \quad (29)$$

where  $\mathbf{x}_{T+h}^c$  is a counterfactual realization of the global economy after the Covid-19 shock hit the economy, namely  $\{\omega_{T+j} = \hat{\omega}_{T+j}\}_{j=1}^4$ , and  $\mathbf{x}_{T+h}^0 = E(\mathbf{x}_{T+h} | \mathcal{I}_T)$  is the conditional expectation of global economy without the Covid-19 shock, conditioning on the information  $\mathcal{I}_T = \{\mathbf{x}_T, \mathbf{x}_{T-1}, \dots\}$ . The distribution of  $\boldsymbol{\eta}^c(T, h)$  can be computed by stochastically simulating  $\mathbf{x}_{T+h}^c$  and  $\mathbf{x}_{T+h}^0$  as described in Sections A.3 and A.4 of Appendix A.

## 4 The Effects of Covid-19 on Economic Activity and Long-term Interest Rates

Our model includes 33 economies, which together cover more than 90% of world GDP, see Table 2. For presentation of our results, we create a euro area block comprising 8 of the 11 countries that initially joined the Euro in 1999: Austria, Belgium, Finland, France, Germany, Italy, Netherlands, and Spain. The time series data for the euro area are constructed as cross-sectionally weighted averages of the domestic variables, using Purchasing Power Parity GDP weights, averaged over the 2014 to 2016 period. In addition to the euro area we also consider a further seven regions, see Table 2.

**Table 2: Countries and Regions in the TGVAR Model**

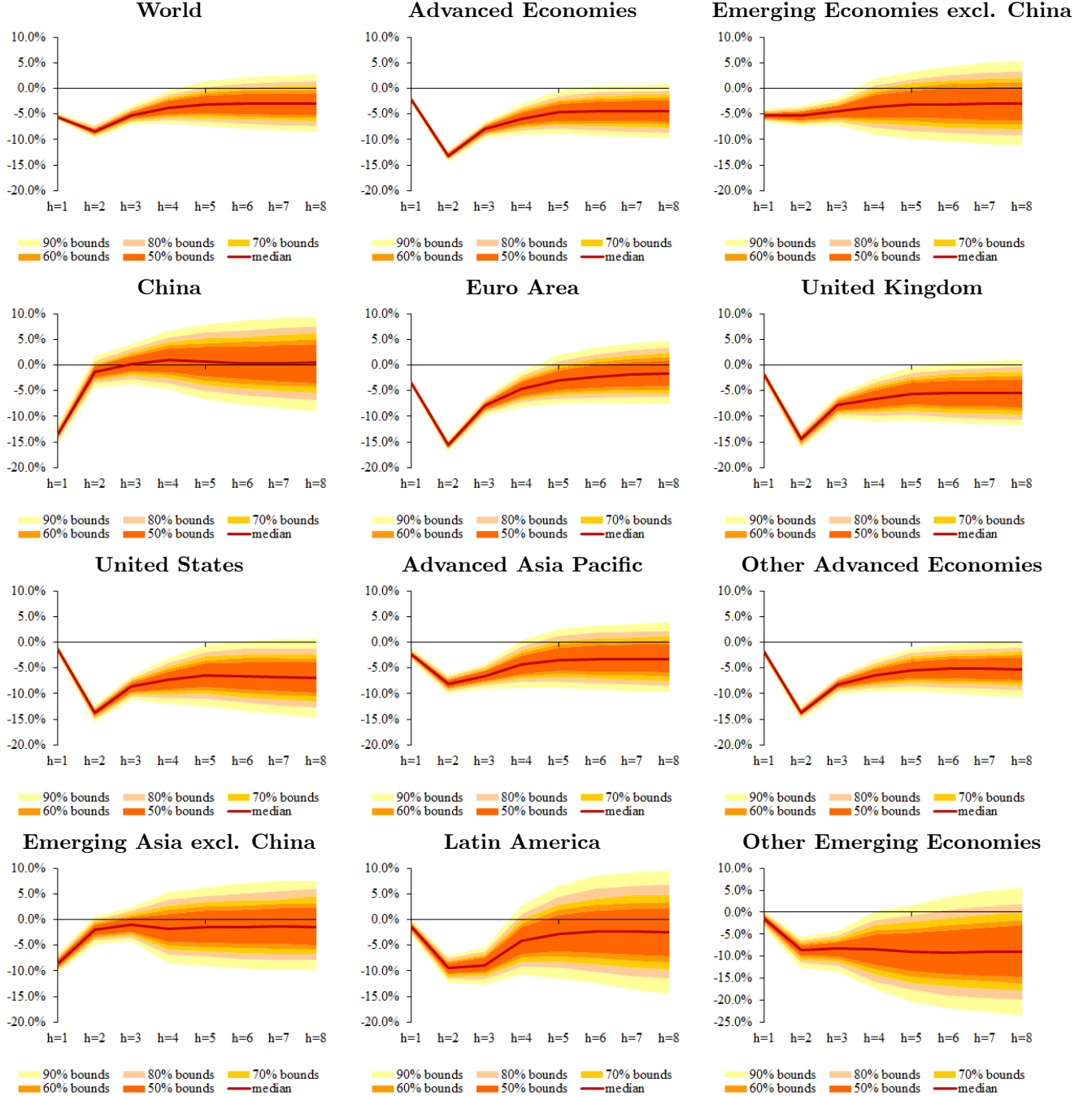
<b>Advanced Economies</b>	<b>Euro Area</b>	<b>Emerging Economies (excl. China)</b>	<b>Emerging Asia (excl. China)</b>
Australia	Austria	Argentina	India
Austria	Belgium	Brazil	Indonesia
Belgium	Finland	Chile	Malaysia
Canada	France	India	Philippines
Finland	Germany	Indonesia	Thailand
France	Italy	Malaysia	
Germany	Netherlands	Mexico	<b>Latin America</b>
Japan	Spain	Peru	Argentina
Korea		Philippines	Brazil
Netherlands	<b>Advanced Asia Pacific</b>	South Africa	Chile
Norway	Australia	Saudi Arabia	Mexico
New Zealand	Japan	Thailand	Peru
Singapore	Korea	Turkey	
Spain	New Zealand		<b>Other Emerging Economies</b>
Sweden	Singapore		Turkey
Switzerland		<b>China</b>	South Africa
United Kingdom	<b>Other Advanced Economies</b>		Saudi Arabia
United States	Canada		
	Norway		
	Sweden		
	Switzerland		
	United Kingdom		

### 4.1 Real GDP Effects are Large and Persistent

Figure 3 reports the results of our counterfactual exercise for real GDP between 2020Q1 and 2021Q4.<sup>2</sup> The solid lines are the generalized impulse responses of real GDP following the

<sup>2</sup>The codes for the TGVAR model will be made available [here](#).

**Figure 3: The Impact of Covid-19 on Real GDP (percent deviation from baseline)**



Notes: The impact is in percent and the horizon is quarterly. This figure plots quantiles of  $\eta^c(T, h)$  defined by (29).



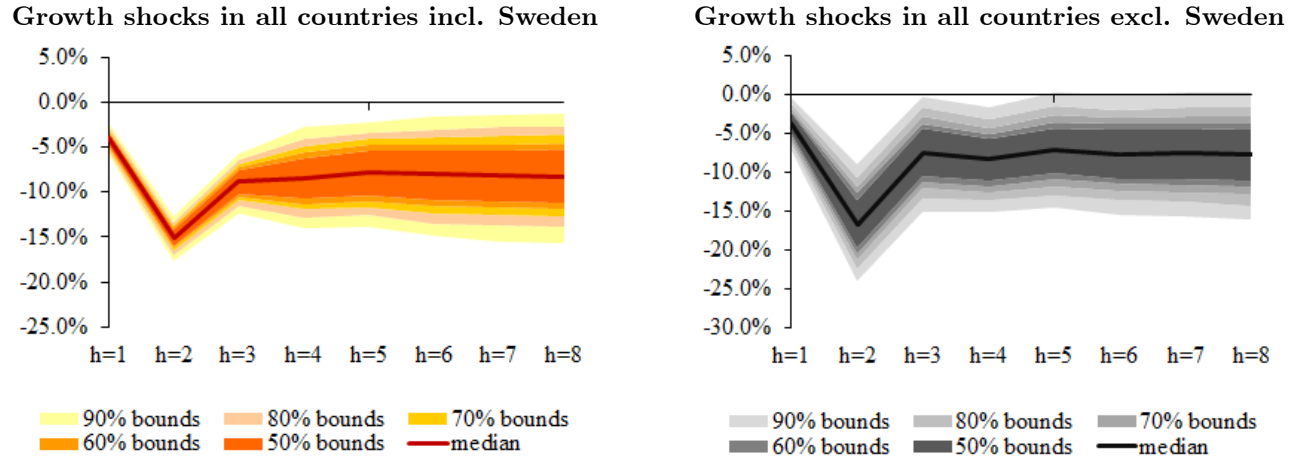
Covid-19 shock, while the bounds represent the range of likely outcomes given the constellation of shocks experienced over the past four decades. Uncertainty around these forecasts are pervasive because of the severity and duration of the Covid-19 pandemic, global spillovers, financial market volatility, the efficacy of policy actions to protect firms and households, and the success of pharmaceutical interventions to contain the spread of the coronavirus. Overall, the Covid-19 pandemic would leave the 2021 GDP about 3 percentage points lower than the model-generated forecast of global GDP in the absence of Covid-19. The adverse impact on Advanced Economies is particularly large—ranging from 2 percentage points below pre-crisis path of GDP by the end of 2021 in the euro area to 6.5 percentage points in the United States.

Among emerging markets, however, the economic impact of the Covid-19 shock varies substantially. In addition to domestic shocks (health crisis and lockdowns), these countries have been facing a range of external shocks as well (plunging trade, collapsing tourism, capital outflows, falling commodity prices), albeit to varying degrees, and have different economic structures (those relying heavily on certain sectors are naturally more vulnerable to the adverse macroeconomic effects of the pandemic). China appears to be an exception largely because most of the country had reopened by early April and its lower size of inward spillovers. Emerging Asia excluding China is expected to be less affected by Covid-19 than Latin America. This is partly due to higher commodity dependence of the latter and tighter financing conditions, as well as being less successful in containing the pandemic.

Figure 4 reports the results of our counterfactual exercise for real GDP of Sweden under two scenarios: (i) growth shock in all 33 countries in our sample arising from the Covid-19 pandemic and (ii) growth shock in all countries except for Sweden. Comparing the two sets of results highlights the importance of spillovers through disruptions in global supply chains, travel, and tourism. The results in Figure 4 illustrate that no country can shield itself from the adverse economic effects of Covid-19 by following less stringent lockdowns.

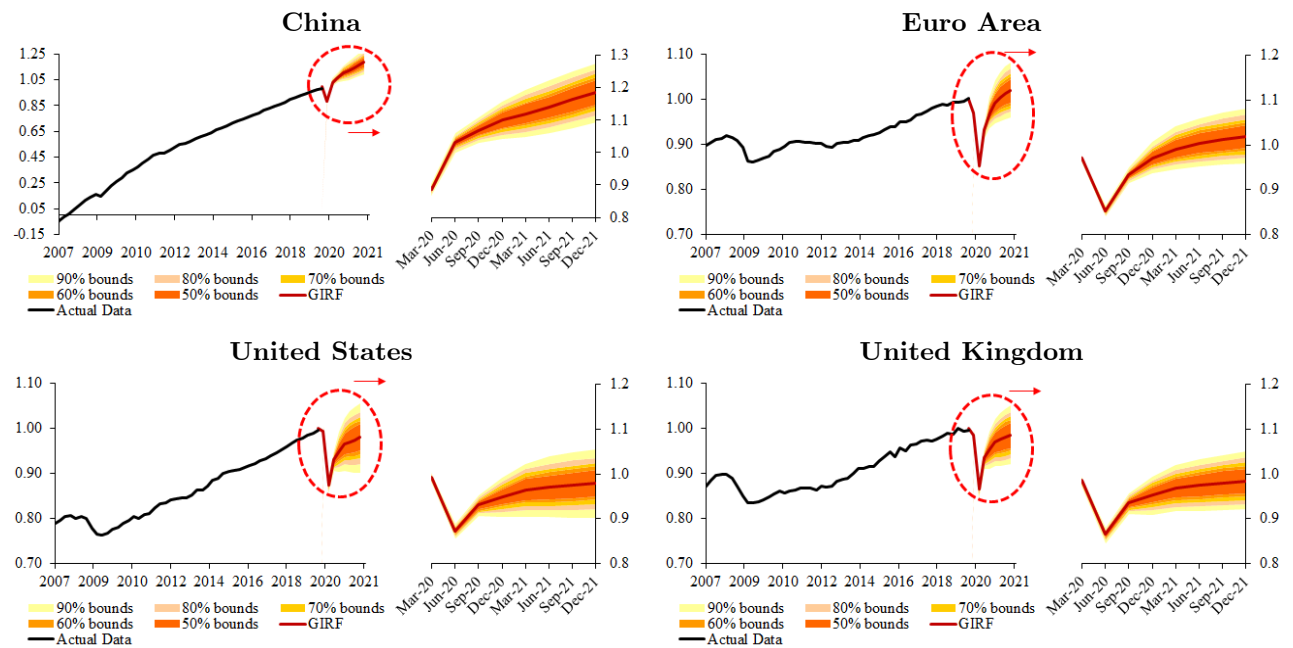
Figures 5 and 6 report the results of our counterfactual exercise for the evolution of real GDP following the Covid-19 shock relative to the 2019Q4 output levels rather than the model-generated forecasts of real GDP in the absence of Covid-19. In other words, we assess how long it will take for different countries/regions to return to their 2019Q4 real GDP levels following the Covid-19 shock. Informed by IMF growth projections in April, global activity is expected to trough in the second quarter of 2020, recovering thereafter. The expected recovery in global activity is mainly driven by Asian economies (most notably China) while the United States and the United Kingdom are less likely to recuperate income losses by the end of 2021 (that is, their GDP is projected to end 2021 below 2019Q4 levels by about 2 and 1.5 percent with high probability, respectively). Consistent with the results in Figure 3, China’s real GDP is expected to recover rapidly the lost ground, while non-Asian

Figure 4: Spillovers to Sweden (percent deviation from baseline)

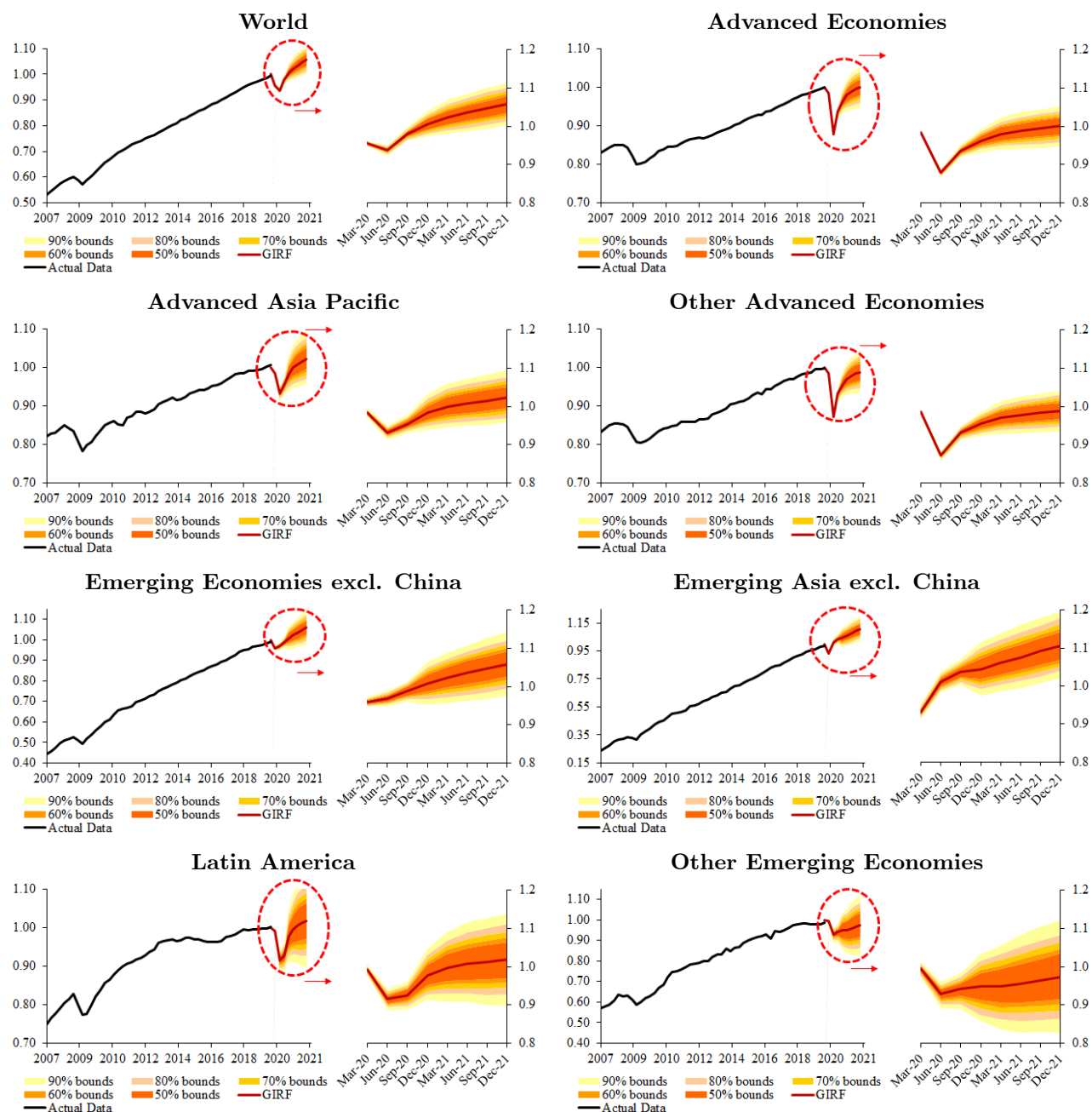


Notes: The impact is in percent and the horizon ( $h$ ) is quarterly.

Figure 5: Dynamics of Real GDP Following the Covid-19 Shock (in logs; 2019Q4=1)



**Figure 6: Dynamics of Regions' Real GDP Following the Covid-19 Shock (in logs; 2019Q4=1)**



emerging economies are likely to take longer to achieve a full recovery. In all cases, there is a significant amount of uncertainty around the counterfactual GDP paths. See also Table 3 for likely growth outcomes. Note that these growth outcomes will be significantly worse if one were to use the updated forecast revisions of the IMF in June 2020 to gauge the size of the shock rather than the April vintage (see Appendix C for details). This is because in June, the IMF updated its GDP forecasts based on more information about the pathway of the pandemic and the intensity and efficacy of containment efforts. The IMF, therefore, downgraded its projections of growth in the first half of 2020 and portrayed a more gradual recovery thereafter than previously forecast.

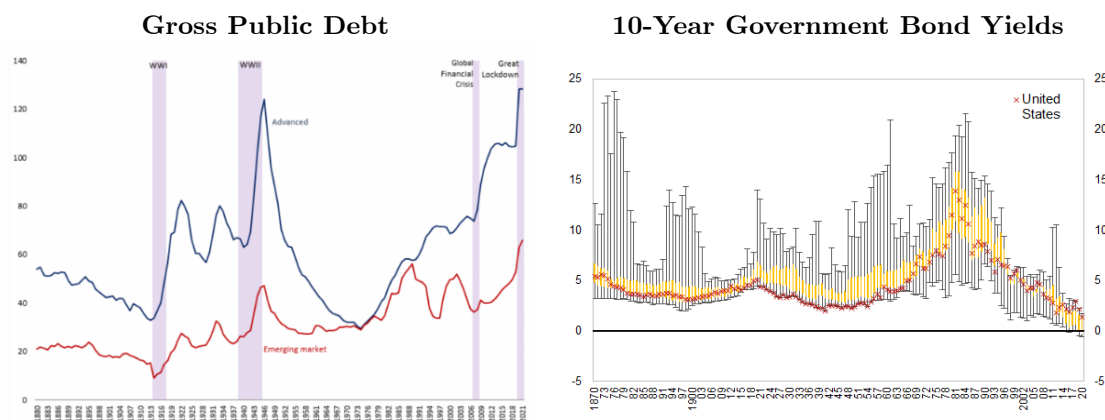
**Table 3: Growth Outcomes Following the Covid-19 Shock (percent change)**

	Q4 over Q4						
	2019	2020			2021		
	Median	10 <sup>th</sup> pctl	Median	90 <sup>th</sup> pctl	10 <sup>th</sup> pctl	Median	90 <sup>th</sup> pctl
<b>Advanced Economies</b>	1.4	-6.8	-3.7	-0.9	1.7	3.9	6.3
United States	2.4	-9.7	-5.1	-0.8	-0.1	3.2	6.4
Euro Area	0.8	-6.4	-3.0	0.6	2.5	5.0	7.6
France	1.0	-4.9	-1.4	2.3	1.2	3.5	5.8
Germany	0.4	-8.6	-3.4	2.3	1.0	3.6	5.8
Italy	0.1	-9.7	-5.3	-1.0	0.8	3.9	7.1
Japan	-0.5	-8.6	-3.2	2.9	0.0	3.4	6.4
United Kingdom	1.3	-9.1	-4.7	-0.7	1.3	3.3	5.7
Canada	1.5	-8.5	-4.1	0.5	-0.4	4.3	8.6
<b>Emerging Markets (excl. China)</b>	3.0	-4.7	0.8	6.4	2.3	4.9	7.4
Emerging Asia (excl. China)	4.6	-2.5	4.3	11.5	4.6	5.9	7.2
Latin America	0.5	-8.8	-2.3	4.6	-1.6	4.1	8.7
China	6.1	4.3	10.0	15.7	4.8	7.9	10.3

## 4.2 Long-term Interest Rates Face Downward Pressures

Global public debt is expected to reach its highest recorded level (above 100 percent of global GDP and higher than the post-World War II peaks) partly driven by the massive fiscal response to the Covid-19 pandemic and its economic fallout (13 percent of GDP globally). At the same time, the 10-year government bond yields are at their historical lows and negative in several advanced economies (Figure 7). To the extent that borrowing costs are projected to stay at low levels, they make it easier to service public debt. Figure 8 reports the results of our counterfactual exercise for long-term interest rates between 2020Q1 and 2021Q4. For advanced economies (especially those that are perceived to be safe havens), long-term interest rates are expected to fall even below their pre-Covid levels as the crisis raises precautionary savings and dampens investment demand. However, the same cannot be said about emerging market economies where borrowing rates can increase rapidly as shown by the upper range of our counterfactual exercise in Figure 8. Among safe havens, Japan appears to be an exception partly driven by Bank of Japan's policy of yield-curve control.

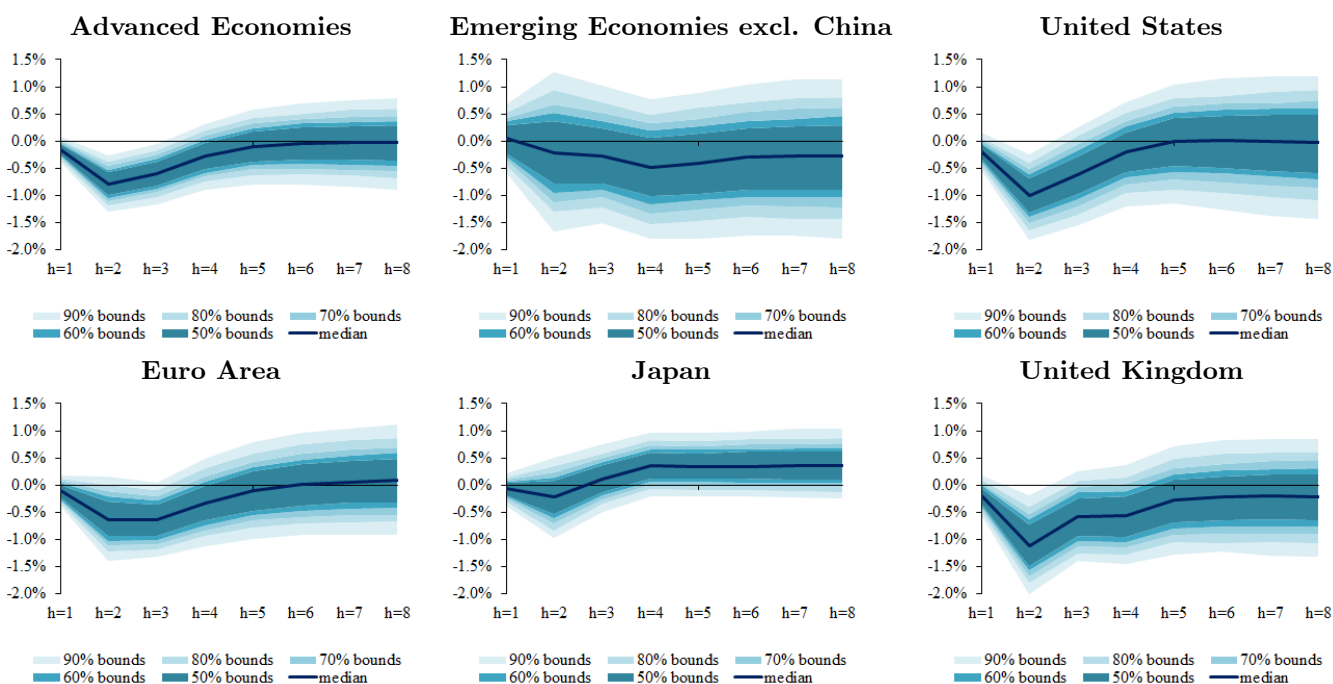
**Figure 7: Public Debt and Market Interest Rates (in percent of GDP and percent respectively)**



Sources: Gaspar and Gopinath (2020), Jordà et al. (2019), and IMF staff calculations.

Note: The sample for the interest rates includes Australia, Belgium, Canada, Denmark, Finland, France, Germany, Italy, Japan, the Netherlands, Norway, Portugal, Spain, Sweden, Switzerland, the United Kingdom, and US. The figure shows the interquartile range (yellow bars) and the 10th and 90th percentiles (whiskers). Red markers signify the United States. Data for 2020 are through the end of March.

**Figure 8: The Impact of Covid-19 on Long-term Interest Rates (percentage points deviation from baseline)**



Notes: The impact is in percentage points and the horizon ( $h$ ) is quarterly.

These predictions are largely borne out by actual data. For example, in the first half of 2020, 10-year government bond yields in the United States, the United Kingdom, and Germany fell by 111, 44, and 10 basis points, respectively, and that of Japan increased by 10 basis points—all within our counterfactual ranges displayed in Figure 8. Among emerging markets, South Africa experienced a 137 basis points increase in its 10-year government bond yields during the first half of 2020—again within our prediction ranges.

## 5 Concluding Remarks

The Covid-19 pandemic has been a shock like no other, initiating simultaneous demand and supply disruptions. In addition, it led to a sharp tightening in global financial market conditions during the first quarter of 2020. Using quarterly data over the past four decades, we first showed that global financial market volatility (beyond certain thresholds) can adversely affect economic growth in a significant majority (80 percent) of advanced countries and for several emerging market economies. We then developed a threshold-augmented dynamic multi-country model, or TGVAR for short, to study the global macroeconomic effects of Covid-19. We identified the country-specific Covid-19 shocks by comparing IMF’s GDP forecasts for Q1 to Q4 of 2020 formed at the end of 2019 (before the spread of the pandemic) to the same forecasts prepared in April 2020. Finally, using the TGVAR model we quantified the range of likely macroeconomic outcomes following the Covid-19 shock.

Our results showed that the Covid-19 pandemic can lead to long-lasting declines in world real GDP with varied effects across regions/countries. The impact of Covid-19 on the US, UK, and several other advanced economies could be particularly severe, while China and other emerging Asian economies are estimated to fare better. We also estimated that the Covid-19 pandemic can lower long-term interest rates below their recent lows in core advanced economies, but the reverse outcome is predicted for emerging markets, with implications for debt servicing costs in these economies. Our findings highlighted the importance of policy interventions to restore the normal functioning of financial markets, as well as adopting other measures (fiscal and liquidity) that can limit bankruptcies of viable firms and support incomes of households. These measures would likely limit the amount of scarring.

Note that the pandemic could resurface in waves—that is, with every easing of social distancing restrictions, the infection rates could rise again, which would require re-imposition of those restrictions, as we have seen in Europe and parts of the United States lately—dampening economic activity and confidence. Appendix C shows how more up-to-date information about the pathway of the pandemic (considering its rarity) can affect our predictions.

# References

- Baqae, D. R. and E. Farhi (2020). [Nonlinear Production Networks with an Application to the Covid-19 Crisis](#). *CEPR Discussion Paper No. DP14742*.
- Bonadio, B., Z. Huo, A. A. Levchenko, and N. Pandalai-Nayar (2020). [Global Supply Chains in the Pandemic](#). *NBER Working Paper No. 27224*.
- Bussière, M., A. Chudik, and G. Sestieri (2012). [Modelling Global Trade Flows: Results from a GVAR Model](#). *Globalization and Monetary Policy Institute Working Paper 119, Federal Reserve Bank of Dallas*.
- Cashin, P., K. Mohaddes, and M. Raissi (2016). [The Global Impact of the Systemic Economies and MENA Business Cycles](#). In I. A. Elbadawi and H. Selim (Eds.), *Understanding and Avoiding the Oil Curse in Resource-Rich Arab Economies*, pp. 16–43. Cambridge University Press, Cambridge.
- Cashin, P., K. Mohaddes, and M. Raissi (2017a). [Fair Weather or Foul? The Macroeconomic Effects of El Niño](#). *Journal of International Economics* 106, 37–54.
- Cashin, P., K. Mohaddes, and M. Raissi (2017b). [China’s Slowdown and Global Financial Market Volatility: Is World Growth Losing Out?](#) *Emerging Markets Review* 31, 164–175.
- Cashin, P., K. Mohaddes, M. Raissi, and M. Raissi (2014). [The Differential Effects of Oil Demand and Supply Shocks on the Global Economy](#). *Energy Economics* 44, 113–134.
- Cesa-Bianchi, A., M. H. Pesaran, and A. Rebucci (2020). [Uncertainty and Economic Activity: A Multi-country Perspective](#). *The Review of Financial Studies* 33(8), 3393–3445.
- Cesa-Bianchi, A., M. H. Pesaran, A. Rebucci, and T. Xu (2012). [China’s Emergence in the World Economy and Business Cycles in Latin America](#). *Economia, The Journal of LACEA* 12, 1–75.
- Chudik, A., V. Grossman, and M. H. Pesaran (2016). [A Multi-country Approach to Forecasting Output Growth Using PMIs](#). *Journal of Econometrics* 192(2), 349–365.
- Chudik, A. and M. H. Pesaran (2016). [Theory and Practice of GVAR Modeling](#). *Journal of Economic Surveys* 30(1), 165–197.
- Chudik, A., M. H. Pesaran, and K. Mohaddes (2020). [Identifying Global and National Output and Fiscal Policy Shocks Using a GVAR](#). *Advances in Econometrics* 41, 143–189. Essays in Honor of Cheng Hsiao.
- Céspedes, L. F., R. Chang, and A. Velasco (2020). [The Macroeconomics of a Pandemic: A Minimalist Model](#). *NBER Working Paper No. 27228*.
- Dees, S., F. di Mauro, M. H. Pesaran, and L. V. Smith (2007). [Exploring the International Linkages of the Euro Area: A Global VAR Analysis](#). *Journal of Applied Econometrics* 22, 1–38.
- di Mauro, F. and M. H. Pesaran (Eds.) (2013). *The GVAR Handbook: Structure and Applications of a Macro Model of the Global Economy for Policy Analysis*. Oxford University Press. ISBN-10: 0199670080.
- Gaspar, V. and G. Gopinath (2020). [Fiscal Policies for a Transformed World](#). *IMFBlog*.
- Hansen, B. (2011). [Threshold Autoregressions in Economics](#). *Statistics and Its Interface* 4, 123–127.
- Jordà, Ò., K. Knoll, D. Kuvshinov, M. Schularick, and A. M. Taylor (2019, 04). [The Rate of Return on Everything, 1870-2015](#). *The Quarterly Journal of Economics* 134(3), 1225–1298.



- Koop, G., M. Pesaran, and S. M. Potter (1996). [Impulse Response Analysis in Nonlinear Multivariate Models](#). *Journal of Econometrics* 74(1), 119 – 147.
- Ludvigson, S. C., S. Ma, and S. Ng (2020). [COVID-19 and the Macroeconomic Effects of Costly Disasters](#). *NBER Working Paper No. 26987*.
- McKibbin, W. J. and R. Fernando (2020). [The Global Macroeconomic Impacts of COVID-19: Seven Scenarios](#). *CAMA Working Paper 19/2020*.
- Milani, F. (2020). [COVID-19 Outbreak, Social Response, and Early Economic Effects: A Global VAR Analysis of Cross-Country Interdependencies](#). *Journal of Population Economics*.
- Mohaddes, K. and M. H. Pesaran (2016). [Country-Specific Oil Supply Shocks and the Global Economy: A Counterfactual Analysis](#). *Energy Economics* 59, 382–399.
- Mohaddes, K. and M. H. Pesaran (2017). [Oil Prices and the Global Economy: Is it Different this Time Around?](#) *Energy Economics* 65, 315–325.
- Mohaddes, K. and M. Raissi (2019). [The U.S. Oil Supply Revolution and the Global Economy](#). *Empirical Economics* 57, 1515–1546.
- Mohaddes, K. and M. Raissi (2020). [Compilation, Revision and Updating of the Global VAR \(GVAR\) Database, 1979Q2-2019Q4](#). *University of Cambridge: Judge Business School (mimeo)*.
- Pesaran, M. H. (2015). [Time Series and Panel Data Econometrics](#). Oxford University Press, Oxford. ISBN-10: 0198736916.
- Pesaran, M. H., T. Schuermann, and L. V. Smith (2009). [Forecasting Economic and Financial Variables with Global VARs](#). *International Journal of Forecasting* 25(4), 642 – 675.
- Pesaran, M. H., T. Schuermann, and S. Weiner (2004). [Modelling Regional Interdependencies using a Global Error-Correcting Macroeconometric Model](#). *Journal of Business and Economics Statistics* 22, 129–162.
- Tong, H. (1990). [Non-linear Time Series: a Dynamical System Approach](#). Oxford Statistical Science Series. Oxford University Press, Oxford. ISBN-10: 0198523009.
- Tsay, R. S. (1998). [Testing and Modeling Multivariate Threshold Models](#). *Journal of the American Statistical Association* 93(443), 1188–1202.



# A Estimation and Simulation of TGVAR

This appendix provides technical details on the estimation and simulation of the threshold-augmented GVAR (TGVAR) model. Section A.1 describes how we estimate the model, while Section A.2 explains the bootstrapping procedure we use to capture the uncertainty of the parameter estimates. Sections A.3 and A.4 outline how we simulate  $\mathbf{x}_{T+h}^0$  and  $\mathbf{x}_{T+h}^c$ , respectively.

## A.1 Estimation of TGVAR Models

Let  $\pi_{\min} = 1\%$  and  $\pi_{\max} = 20\%$ .<sup>3</sup> We set  $S_{\pi,T} = \{j/T; \pi_{\min} < j/T < \pi_{\max}\}$ , and our grid set for  $\gamma$  is given by

$$S_{\gamma} = \{q_{grve}(1 - \pi); \pi \in S_{\pi,T}\}, \quad (\text{A.1})$$

where  $q_{grve}(\alpha)$  is  $\alpha$  quantile of  $\{grve_1, grve_2, \dots, grve_T\}$ , and  $grve_t$  is the global volatility measure for quarter  $t$ , defined by (1).

The  $VAR(1)$  in  $\mathbf{f}_t = (\mathbf{g}_t', \tilde{\mathbf{y}}_t')'$ ,

$$\mathbf{f}_t = \mathbf{c}_f + \mathbf{\Theta} \mathbf{f}_{t-1} + \mathbf{v}_t, \quad (\text{A.2})$$

is estimated by least squares. For a given  $\gamma_s \in S_{\gamma}$ , we set  $\gamma_i = \gamma_s$  for all  $i$  belonging either to advanced and emerging economies, and estimate

$$\mathbf{y}_{it} = \mathbf{d}_i + \mathbf{\Phi}_i \mathbf{y}_{i,t-1} + \mathbf{B}_{y,i} \mathbf{y}_{i,t-1}^* + \mathbf{B}_{f,i} \mathbf{f}_{t-1} + \mathbf{\lambda}_{y,i} z_{t-1}(\gamma_s) + \mathbf{A}_{0,i} \mathbf{v}_t + \mathbf{u}_{it}, \quad (\text{A.3})$$

by least squares. Estimates of (A.2)–(A.3) are used to obtain the GVAR representation for  $\mathbf{x}_t = (\mathbf{y}_t', \mathbf{g}_t')'$ :

$$\mathbf{x}_t = \mathbf{c} + \mathbf{G} \mathbf{x}_{t-1} + \mathbf{A} \mathbf{z}_{t-1}(\gamma_s) + \mathbf{e}_t, \text{ with } \mathbf{e}_t = \mathbf{\Gamma} \mathbf{v}_t + \boldsymbol{\varepsilon}_t, \quad (\text{A.4})$$

as described in the main text, where  $\gamma_s = \gamma_s \boldsymbol{\tau}_{n+1}$ , and  $\boldsymbol{\tau}_{n+1}$  is  $(n+1) \times 1$  vector of ones. Let  $\hat{\mathbf{e}}_t = \hat{\mathbf{e}}_t(\gamma_s)$  denote the estimated residuals in (A.4). We compute

$$\hat{\gamma}_{adv} = \arg \min_{\gamma_s \in S_{\gamma}} \sum_{t=2}^T \sum_{i \in \mathcal{I}_{adv}} \hat{e}_{GDP,it}^2, \quad (\text{A.5})$$

and

$$\hat{\gamma}_{eme} = \arg \min_{\gamma_s \in S_{\gamma}} \sum_{t=2}^T \sum_{i \in \mathcal{I}_{eme}} \hat{e}_{GDP,it}^2, \quad (\text{A.6})$$

where  $\mathcal{I}_{adv}$  is the index set of advanced economies, and  $\mathcal{I}_{eme}$  is the index set of emerging economies.

Given the estimates  $\hat{\gamma}_{adv}$  and  $\hat{\gamma}_{eme}$ , we set  $\hat{\gamma}_i = \hat{\gamma}_{adv}$  if economy  $i$  belongs to the group of advanced economies and  $\hat{\gamma}_i = \hat{\gamma}_{eme}$  if economy  $i$  belongs to the group of emerging economies. Then

---

<sup>3</sup>The choice of  $\pi_{\min} = 1\%$  implies that at least two time periods have nonzero threshold values, using the full sample 1979Q2 to 2019Q4 as well as the 1990Q1–2019Q4 subsample. We use  $\pi_{\min} = 1\%$  in the simple multi-country threshold augmented dynamic model specifications, given by (4). In the full-scale TGVAR specifications (14), where many more country-specific coefficients are estimated, we set  $\pi_{\min} = 2\%$ .

(A.3) is re-estimated using  $\hat{\gamma}_{adv}$  or  $\hat{\gamma}_{eme}$  (depending on the country grouping). We have excluded the threshold variable from countries where  $\hat{\lambda}_{\Delta gdp,i} > 0$ . The corresponding GVAR model is then estimated and solved based on (A.2)–(A.3). In particular, using hats to denote the corresponding estimates, we have

$$\mathbf{x}_t = \hat{\mathbf{c}} + \hat{\mathbf{G}}\mathbf{x}_{t-1} + \hat{\mathbf{\Lambda}}\mathbf{z}_{t-1}(\hat{\gamma}) + \hat{\mathbf{e}}_t, \quad \hat{\mathbf{e}}_t = \hat{\mathbf{\Gamma}}\hat{\mathbf{v}}_t + \hat{\boldsymbol{\varepsilon}}_t.$$

## A.2 Bootstrapping the TGVAR Model

This section describes how we generate bootstrap replications of  $\hat{\mathbf{c}}, \hat{\mathbf{G}}, \hat{\mathbf{\Lambda}}, \hat{\mathbf{\Gamma}}, \hat{\mathbf{v}}_t$  and  $\hat{\boldsymbol{\varepsilon}}_t$ , denoted as  $\hat{\mathbf{c}}^{(r)}, \hat{\mathbf{G}}^{(r)}, \hat{\mathbf{\Lambda}}^{(r)}, \hat{\mathbf{\Gamma}}^{(r)}, \hat{\mathbf{v}}_t^{(r)}$  and  $\hat{\boldsymbol{\varepsilon}}_t^{(r)}$ , for the  $r^{th}$  replication.

1. We generate  $\hat{\mathbf{v}}_t^{(r)}$ , and  $\hat{\boldsymbol{\varepsilon}}_t^{(r)}$ , for  $t = 2, 3, \dots, T$ , as a random shuffle of  $\{\hat{\mathbf{v}}_t, t = 2, 3, \dots, T\}$  and  $\{\hat{\boldsymbol{\varepsilon}}_t, t = 2, 3, \dots, T\}$ , respectively.
2. We set  $\mathbf{x}_1^{(r)} = \mathbf{x}_1$  and  $\mathbf{z}_1^{(r)}(\hat{\gamma}) = \mathbf{z}_1(\hat{\gamma})$ , and for  $t = 2, 3, 4, \dots, T$ , we compute

$$\mathbf{x}_t^{(r)} = \hat{\mathbf{c}} + \hat{\mathbf{G}}\mathbf{x}_{t-1}^{(r)} + \hat{\mathbf{\Lambda}}\mathbf{z}_{t-1}^{(r)}(\hat{\gamma}) + \hat{\mathbf{\Gamma}}\hat{\mathbf{v}}_t^{(r)} + \hat{\boldsymbol{\varepsilon}}_t^{(r)}, \quad (\text{A.7})$$

$$z_t^{(r)}(\hat{\gamma}_i) = I\left(\text{grve}_t^{(r)} > \hat{\gamma}_i\right), \text{ for } i = 0, 1, 2, \dots, n, \quad (\text{A.8})$$

recalling that  $\hat{\gamma}_i = \hat{\gamma}_{adv}$  if economy  $i$  belongs to the group of advanced economies, and  $\hat{\gamma}_i = \hat{\gamma}_{eme}$  if economy  $i$  belongs to the group of emerging economies.

3. We check  $\sum_{t=1}^T z_t^{(r)}(\hat{\gamma}_i) > 1$  for all  $i$  (advanced and emerging). If not, repeat steps 1–3 until this condition is satisfied.
4. Using generated data  $\{\mathbf{x}_t^{(r)}\}$  and the threshold values  $(\hat{\gamma}_{adv}, \hat{\gamma}_{eme})$ , we estimate (A.2)–(A.3) and compute the corresponding GVAR representation (A.4), denoted as

$$\begin{aligned} \mathbf{x}_t^{(r)} &= \hat{\mathbf{c}}^{(r)} + \hat{\mathbf{G}}^{(r)}\mathbf{x}_{t-1}^{(r)} + \hat{\mathbf{\Lambda}}^{(r)}\mathbf{z}_{t-1}^{(r)}(\hat{\gamma}) + \hat{\mathbf{e}}_t^{(r)}, \\ \hat{\mathbf{e}}_t^{(r)} &= \hat{\mathbf{\Gamma}}^{(r)}\hat{\mathbf{v}}_t^{(r)} + \hat{\boldsymbol{\varepsilon}}_t^{(r)}. \end{aligned} \quad (\text{A.9})$$

$\hat{\boldsymbol{\Sigma}}_e^{(r)}$  is given by  $\hat{\boldsymbol{\Sigma}}_e^{(r)} = \hat{\mathbf{\Gamma}}^{(r)}\hat{\boldsymbol{\Sigma}}_v^{(r)}\hat{\mathbf{\Gamma}}^{(r)'} + \hat{\boldsymbol{\Sigma}}_\varepsilon^{(r)}$ ,  $\hat{\boldsymbol{\Sigma}}_v^{(r)} = \frac{1}{T-1} \sum_{t=2}^T \mathbf{v}_t^{(r)}\mathbf{v}_t^{(r)'}$  and  $\hat{\boldsymbol{\Sigma}}_\varepsilon^{(r)} = \frac{1}{T-1} \sum_{t=2}^T \boldsymbol{\varepsilon}_t^{(r)}\boldsymbol{\varepsilon}_t^{(r)'}$ .

## A.3 Simulation of $\mathbf{x}_{T+h}^0$

Bootstrap replications for  $\mathbf{x}_{T+h}^0$  (conditional prediction of the model in the absence of Covid-19 shock) are generated recursively for  $h = 1, 2, \dots, h_{\max}$ . Let  $r = 1, 2, \dots, R$ .

1. We generate  $\hat{\mathbf{v}}_{T+h}^{(r)}$ , and  $\hat{\boldsymbol{\varepsilon}}_{T+h}^{(r)}$ , for  $h = 1, 2, \dots, h_{\max}$ , as a random shuffle of  $\{\hat{\mathbf{v}}_t, t = 2, 3, \dots, T\}$  and  $\{\hat{\boldsymbol{\varepsilon}}_t, t = 2, 3, \dots, T\}$ , respectively.

2. For  $h = 1$  we compute

$$\mathbf{x}_{T+1}^{0,(r)} = \hat{\mathbf{c}}^{(r)} + \hat{\mathbf{G}}^{(r)} \mathbf{x}_T + \hat{\mathbf{\Lambda}}^{(r)} \mathbf{z}_T^0(\hat{\gamma}) + \hat{\mathbf{\Gamma}}^{(r)} \hat{\mathbf{v}}_{T+1}^{(r)} + \hat{\mathbf{\varepsilon}}_{T+1}^{(r)}, \quad (\text{A.10})$$

$$z_{T+1}^{0,(r)}(\hat{\gamma}_i) = I\left(\text{grve}_{T+1}^{0,(r)} > \hat{\gamma}_i\right), \text{ for } i = 0, 1, 2, \dots, n, \quad (\text{A.11})$$

where  $\hat{\mathbf{c}}^{(r)}, \hat{\mathbf{G}}^{(r)}, \hat{\mathbf{\Lambda}}^{(r)}, \hat{\mathbf{\Gamma}}^{(r)}$  are the bootstrap replication  $r$  of  $\hat{\mathbf{c}}, \hat{\mathbf{G}}, \hat{\mathbf{\Lambda}}, \hat{\mathbf{\Gamma}}$  computed as described in Section A.2.

3. For  $h = 2, 3, \dots, h_{\max}$ , we compute

$$\mathbf{x}_{T+h}^{0,(r)} = \hat{\mathbf{c}}^{(r)} + \hat{\mathbf{G}}^{(r)} \mathbf{x}_{T+h-1}^{0,(r)} + \hat{\mathbf{\Lambda}}^{(r)} \mathbf{z}_{T+h-1}^{0,(r)}(\hat{\gamma}) + \hat{\mathbf{\Gamma}}^{(r)} \hat{\mathbf{v}}_{T+h}^{(r)} + \hat{\mathbf{\varepsilon}}_{T+h}^{(r)}, \quad (\text{A.12})$$

$$z_{T+h}^{0,(r)}(\hat{\gamma}_i) = I\left(\text{grve}_{T+h}^{0,(r)} > \hat{\gamma}_i\right), \text{ for } i = 0, 1, 2, \dots, n, \quad (\text{A.13})$$

4. Steps 1–3 are repeated for  $r = 1, 2, \dots, R$ . Mean of  $\mathbf{x}_{T+h}^0$  is estimated as  $\bar{\mathbf{x}}_{T+h}^0 = R^{-1} \sum_{r=1}^R \mathbf{x}_{T+h}^{0,(r)}$ , and quantiles of  $\mathbf{x}_{T+h}^0$  are estimated as quantiles of  $\left\{\mathbf{x}_{T+h}^{0,(r)}, r = 1, 2, \dots, R\right\}$ .

## A.4 Simulation of $\mathbf{x}_{T+h}^c$

For  $r = 1, 2, \dots, R$ , we first compute

$$\hat{\omega}_{T+1}^{(r)} = \hat{\mathbf{D}}_e^{(r)} \boldsymbol{\kappa}_1, \quad (\text{A.14})$$

where  $\boldsymbol{\kappa}_1$  is the vector of shock sizes, and

$$\hat{\mathbf{D}}_e^{(r)} = \hat{\mathbf{\Sigma}}_e^{(r)} \mathbf{S}' \left( \mathbf{S} \hat{\mathbf{\Sigma}}_e^{(r)} \mathbf{S}' \right)^{-1}. \quad (\text{A.15})$$

For  $q = 2, 3, 4$ , we compute

$$\hat{\omega}_{T+2}^{(r)} = \hat{\mathbf{D}}_e^{(r)} \left( \boldsymbol{\kappa}_2 - \mathbf{S} \hat{\mathbf{G}}^{(r)} \hat{\omega}_{T+1}^{(r)} \right) \quad (\text{A.16})$$

$$\hat{\omega}_{T+3}^{(r)} = \hat{\mathbf{D}}_e^{(r)} \left[ \boldsymbol{\kappa}_3 - \mathbf{S} \hat{\mathbf{G}}^{(r)} \hat{\omega}_{T+2}^{(r)} - \mathbf{S} \left( \hat{\mathbf{G}}^{(r)} \right)^2 \hat{\omega}_{T+1}^{(r)} \right] \quad (\text{A.17})$$

$$\hat{\omega}_{T+4}^{(r)} = \hat{\mathbf{D}}_e^{(r)} \left[ \boldsymbol{\kappa}_4 - \mathbf{S} \hat{\mathbf{G}}^{(r)} \hat{\omega}_{T+3}^{(r)} - \mathbf{S} \left( \hat{\mathbf{G}}^{(r)} \right)^2 \hat{\omega}_{T+2}^{(r)} - \mathbf{S} \left( \hat{\mathbf{G}}^{(r)} \right)^3 \hat{\omega}_{T+1}^{(r)} \right], \quad (\text{A.18})$$

where  $\hat{\mathbf{G}}^{(r)}$  and  $\hat{\mathbf{\Sigma}}_e^{(r)}$  are the bootstrap replications of  $\hat{\mathbf{G}}$  and  $\hat{\mathbf{\Sigma}}_e$  described in Section A.2.

Bootstrap replications for  $\mathbf{x}_{T+h}^c$  are generated recursively for  $h = 1, 2, \dots, h_{\max}$ .

1. We generate  $\hat{\mathbf{v}}_{T+h}^{(r)}$ , and  $\hat{\mathbf{\varepsilon}}_{T+h}^{(r)}$ , for  $h = 1, 2, \dots, h_{\max}$ , as a random shuffle of  $\{\hat{\mathbf{v}}_t, t = 2, 3, \dots, T\}$  and  $\{\hat{\mathbf{\varepsilon}}_t, t = 2, 3, \dots, T\}$ , respectively.

2. For  $h = 1$  we compute

$$\mathbf{x}_{T+1}^{c,(r)} = \hat{\mathbf{c}}^{(r)} + \hat{\mathbf{G}}^{(r)}\mathbf{x}_T + \hat{\mathbf{\Lambda}}^{(r)}\mathbf{z}_T(\hat{\gamma}) + \hat{\boldsymbol{\omega}}_{T+1}^{(r)} + \hat{\mathbf{\Gamma}}^{(r)}\hat{\mathbf{v}}_{T+1}^{(r)} + \hat{\boldsymbol{\varepsilon}}_{T+1}^{(r)}, \quad (\text{A.19})$$

$$z_{T+1}^{c,(r)}(\hat{\gamma}_i) = I\left(\text{grve}_{T+1}^{c,(r)} > \hat{\gamma}_i\right), \text{ for } i = 0, 1, 2, \dots, n, \quad (\text{A.20})$$

where  $\hat{\mathbf{c}}^{(r)}, \hat{\mathbf{G}}^{(r)}, \hat{\mathbf{\Lambda}}^{(r)}, \hat{\mathbf{\Gamma}}^{(r)}$  are the bootstrap replication  $r$  of  $\hat{\mathbf{c}}, \hat{\mathbf{G}}, \hat{\mathbf{\Lambda}}, \hat{\mathbf{\Gamma}}$  as described in Section [A.2](#).

3. For  $h = 2, 3, \dots, h_{\max}$ , we compute

$$\mathbf{x}_{T+h}^{c,(r)} = \hat{\mathbf{c}}^{(r)} + \hat{\mathbf{G}}^{(r)}\mathbf{x}_{T+h-1}^{c,(r)} + \hat{\mathbf{\Lambda}}^{(r)}\mathbf{z}_{T+h-1}^{c,(r)}(\hat{\gamma}) + \hat{\boldsymbol{\omega}}_{T+h}^{(r)} + \hat{\mathbf{\Gamma}}^{(r)}\hat{\mathbf{v}}_{T+h}^{(r)} + \hat{\boldsymbol{\varepsilon}}_{T+h}^{(r)}, \quad (\text{A.21})$$

$$z_{T+h}^{c,(r)}(\hat{\gamma}_i) = I\left(\text{grve}_{T+h}^{c,(r)} > \hat{\gamma}_i\right), \text{ for } i = 0, 1, 2, \dots, n, \quad (\text{A.22})$$

4. Steps 1 – 3 are repeated for  $r = 1, 2, \dots, R$ . Quantiles of  $\mathbf{x}_{T+h}^c$  are estimated as quantiles of  $\{\mathbf{x}_{T+h}^{c,(r)}, r = 1, 2, \dots, R\}$ .

## B Threshold Effects

This appendix provides additional results on the choice of the global volatility measure (Section [B.1](#)) and on the robustness of the threshold effects to the choice of the sample period (Section [B.2](#)).

### B.1 Alternative Measures of Global Volatility

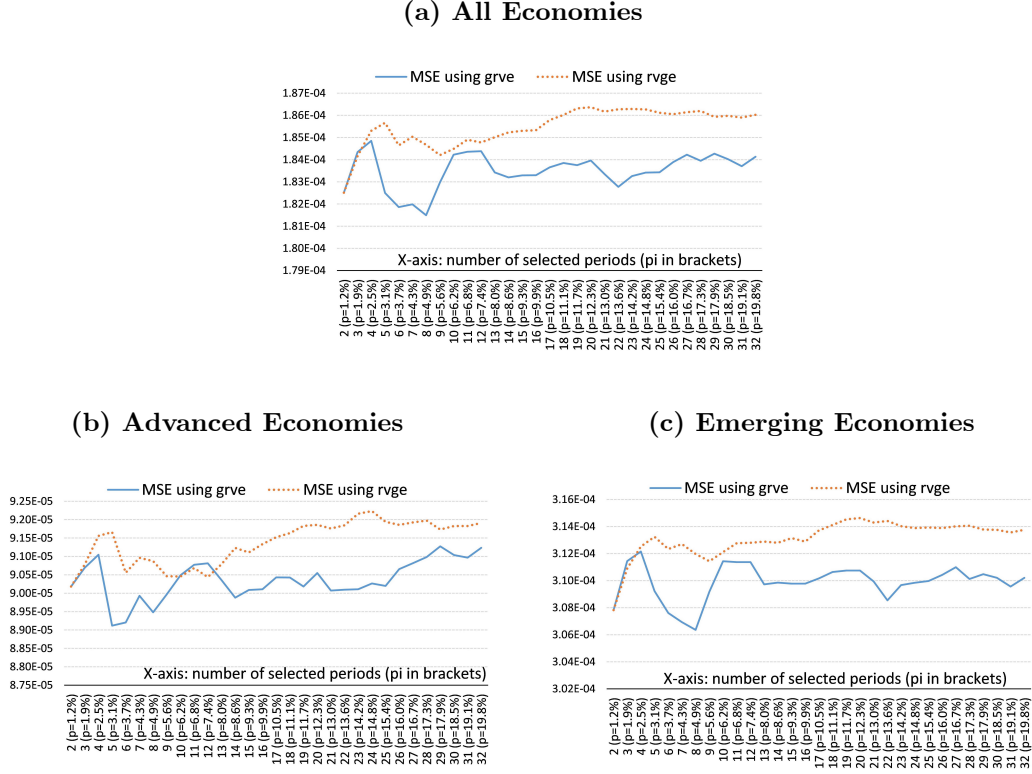
In addition to our preferred measure of global volatility, or  $\text{grve}_t$ —given by (1)—, we consider the realized volatility of the global equity returns, or  $\text{rvge}_t$ —given by (3)—, and the VIX index,  $\text{vix}_t$  (<http://www.cboe.com/vix>). The VIX index is available on the CBOE website from 1990.<sup>4</sup> To differentiate among these measures, we compute the average of the squared residuals (MSE) of the threshold-augmented dynamic output growth models  $\Delta y_{it} = c_i + \rho_i \Delta y_{it-1} + \varphi_i z_{t-1}(\gamma) + e_{it}$ . We plot the minimized values of MSE for different values of the threshold parameter ( $\gamma$ ). We consider indicator-specific grids of thresholds defined by the set  $S_{\pi,T} = \{j/T; \pi_{\min} < j/T < \pi_{\max}\}$ ; namely, the indicator-specific grid of thresholds is given by  $(1 - \pi)$  quantiles of the given indicator,  $\pi \in S_{\pi,T}$ .

Figure [B.1](#) plots the MSEs for different values of  $\pi$  ( $j$ ) using the full sample 1979Q2–2019Q4 for  $\text{grve}_t$  and  $\text{rvge}_t$ . To facilitate comparisons with the VIX index, Figure [B.2](#) shows the MSEs for the subsample 1990Q1–2019Q4, using all three global volatility measures. Each of these figures shows the MSEs for the full set of economies, as well as the subsamples of advanced countries and emerging markets. The results clearly show that the  $\text{grve}_t$  measure performs best in terms of MSEs in all cases considered, and is preferred over the other two measures. Note that the underlying regression models contain the same number of estimated parameters and as a result the MSE outcomes across

<sup>4</sup>Historical VIX data can be downloaded from [here](#). This data is subject to a change in methodology that occurred in September 22, 2003.

the three measures are comparable. Therefore, we conclude that data speaks in favor of  $grve_t$ , which happened to be our choice based on our *a priori* arguments spelled out in the paper.

**Figure B.1: MSE Objective Functions Using the 1979Q2–2019Q4 Subsample**



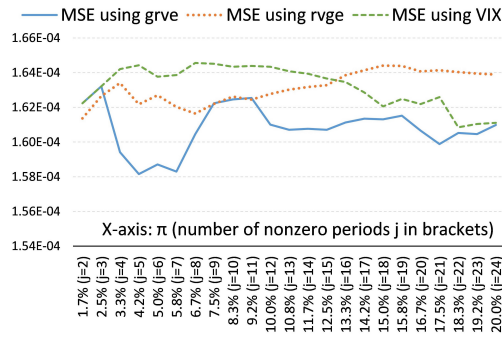
Notes: This chart shows average MSE of the threshold-augmented dynamic output growth models  $\Delta y_{it} = c_i + \rho_i \Delta y_{it-1} + \varphi_i z_{t-1}(\gamma) + e_{it}$  estimated for the grid of threshold values (x-axis) for two choices of volatility measures:  $grve_t$  (solid blue line), and  $rvge_t$  (dotted orange line).

## B.2 Robustness of Threshold Effects to the Choice of Sample Period (1990Q1–2019Q4 Subsample)

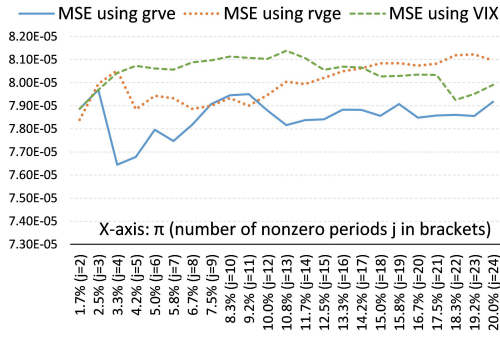
We also investigate the robustness of our threshold effects to the choice of time period. To this end we consider the sub-sample 1990Q1–2019Q4 which excludes the 1987 stock market crash whose macroeconomic impact was rather short lived, avoids breaks in error variances due to the so called “Great Moderation”, and better captures the trade and financial market globalization of emerging economies that gathered pace post 1990. The results, in Table B.1, show that in 16 advanced economies and 5 emerging markets (out of 19 and 14 countries in each income group, respectively), global volatility ( $grve_t$ ) (i.e., beyond the threshold  $\gamma$ ) is associated with lower output growth subsequently. While the estimate of  $\gamma$  remains unchanged, we are able to detect the presence of threshold effects in a larger number of economies.

Figure B.2: MSE Objective Functions Using the 1990Q1–2019Q4 Subsample

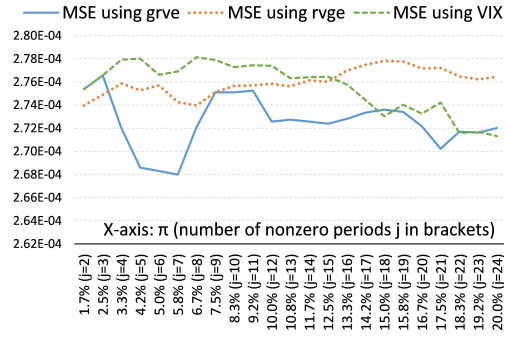
(a) All Economies



(b) Advanced Economies



(c) Emerging Economies



Notes: This chart shows average MSE of the threshold-augmented dynamic output growth models  $\Delta y_{it} = c_i + \rho_i \Delta y_{it-1} + \varphi_i z_{t-1}(\gamma) + e_{it}$  estimated for the grid of threshold values (x-axis) for three choices of volatility measures: *grve*<sub>*t*</sub> (solid blue line), *rvge*<sub>*t*</sub> (dotted orange line) and *vix*<sub>*t*</sub> (dashed green line).

**Table B.1: Estimates of Threshold Coefficient  $\varphi$ , Threshold Parameter  $\gamma$ , and AR(1) Coefficients in Threshold-augmented AR Specifications, 1990Q1–2019Q4**

(a) **Advanced economies:  $\hat{p} = 3.33\%$  and  $\hat{\gamma}_{adv} = 0.156$**

	$\hat{\varphi}$	t-ratio	$\hat{\rho}$	t-ratio	$\bar{R}^2$	$\hat{\sigma}^2$
Australia	-0.0064 <sup>†</sup>	-2.18	0.08	0.92	3.3%	0.0058
Austria	-0.0222 <sup>‡</sup>	-4.93	-0.21 <sup>†</sup>	-2.39	16.1%	0.0081
Belgium	-0.0128 <sup>‡</sup>	-3.72	0.05	0.58	12.2%	0.0063
Canada	-0.0101 <sup>‡</sup>	-3.88	0.48 <sup>‡</sup>	6.37	38.9%	0.0049
Finland	-0.0225 <sup>‡</sup>	-3.28	0.12	1.26	11.8%	0.0125
France	-0.0086 <sup>‡</sup>	-3.49	0.29 <sup>‡</sup>	3.22	25.6%	0.0042
Germany	-0.0195 <sup>‡</sup>	-4.69	0.00	0.04	18.1%	0.0073
Italy	-0.0129 <sup>‡</sup>	-3.65	0.15	1.54	17.9%	0.0061
Japan	-0.0133 <sup>‡</sup>	-2.56	0.13	1.35	9.1%	0.0092
Korea	-0.0110 <sup>*</sup>	-1.56	0.23 <sup>†</sup>	2.50	7.3%	0.0134
Netherlands	-0.0136 <sup>‡</sup>	-5.01	0.34 <sup>‡</sup>	4.37	37.0%	0.0049
Norway	-0.0131 <sup>†</sup>	-2.23	-0.29 <sup>‡</sup>	-3.24	8.8%	0.0114
New Zealand	-0.0003	-0.08	0.33 <sup>‡</sup>	3.69	9.2%	0.0069
Singapore	-0.0121	-1.23	0.19 <sup>†</sup>	2.06	5.0%	0.0182
Spain	-0.0048 <sup>‡</sup>	-2.38	0.70 <sup>‡</sup>	11.13	59.7%	0.0036
Sweden	-0.0246 <sup>‡</sup>	-4.29	-0.14	-1.51	12.3%	0.0102
Switzerland	-0.0134 <sup>‡</sup>	-3.49	0.08	0.89	11.3%	0.0071
United Kingdom	-0.0084 <sup>‡</sup>	-2.49	0.28 <sup>‡</sup>	2.99	18.2%	0.0059
United States	-0.0118 <sup>‡</sup>	-4.19	0.24 <sup>‡</sup>	2.65	26.9%	0.0049
<hr/>						
MG (equally weighted)	-0.0127 <sup>‡</sup>	-9.02	0.16 <sup>‡</sup>	3.01		
MG (PPP-GDP weighted)	-0.0121 <sup>‡</sup>	-14.75	0.21 <sup>‡</sup>	6.66		

(b) **Emerging economies:  $\hat{p} = 5.83\%$  and  $\hat{\gamma}_{eme} = 0.129$**

	$\hat{\varphi}$	t-ratio	$\hat{\rho}$	t-ratio	$\bar{R}^2$	$\hat{\sigma}^2$
Argentina	-0.0089	-1.25	0.43 <sup>‡</sup>	5.27	19.3%	0.0183
Brazil	-0.0091 <sup>*</sup>	-1.41	0.04	0.38	0.2%	0.0165
Chile	-0.0104 <sup>†</sup>	-1.83	0.11	1.13	3.2%	0.0142
China	0.0033	0.73	0.18 <sup>*</sup>	1.94	1.7%	0.0117
India	-0.0056	-0.90	-0.22 <sup>†</sup>	-2.39	3.2%	0.0156
Indonesia	-0.0060	-1.01	0.32 <sup>‡</sup>	3.61	9.5%	0.0153
Malaysia	-0.0112 <sup>†</sup>	-1.87	0.22 <sup>†</sup>	2.38	9.0%	0.0145
Mexico	-0.0158 <sup>‡</sup>	-3.01	0.16 <sup>*</sup>	1.80	10.9%	0.0129
Peru	-0.0121 <sup>*</sup>	-1.35	0.21 <sup>†</sup>	2.35	4.3%	0.0231
Philippines	-0.0042	-1.16	0.20 <sup>†</sup>	2.22	4.7%	0.0091
South Africa	-0.0027 <sup>*</sup>	-1.28	0.60 <sup>‡</sup>	8.08	37.7%	0.0053
Saudi Arabia	-0.0027	-0.69	0.63 <sup>‡</sup>	9.15	40.9%	0.0101
Thailand	-0.0325 <sup>‡</sup>	-3.74	-0.07	-0.83	9.3%	0.0220
Turkey	-0.0275 <sup>‡</sup>	-2.60	-0.08	-0.84	4.1%	0.0268
<hr/>						
MG (equally weighted)	-0.0104 <sup>‡</sup>	-4.04	0.19 <sup>‡</sup>	2.99		
MG (PPP-GDP weighted)	-0.0042	-1.15	0.12	1.63		

Notes: Our threshold-augmented dynamic output growth model is given by  $\Delta y_{it} = c_i + \rho_i \Delta y_{it-1} + \varphi_i z_{t-1}(\gamma) + e_{it}$ , where  $\Delta y_{it}$  is the first difference of the logarithm of real GDP in country  $i$  during quarter  $t$  and  $z_t = I(grve_t > \gamma)$ .  $I(\mathcal{A})$  is an indicator variable that takes the value of unity if event  $\mathcal{A}$  occurs and zero otherwise.  $grve_t$  is a measure of global volatility defined by (1), and  $\gamma$  is the threshold parameter. The estimation sample is 1990Q1 to 2019Q4. Statistical significance is denoted by \*, <sup>†</sup> and <sup>‡</sup>, at 10%, 5% and 1% levels, respectively.

## C Counterfactual Analysis Using June-January IMF Forecast Revisions

The IMF revised its growth forecasts down for most countries in June as the extent of the Covid-19 shock and its economic fallout became clearer. In this appendix, we use these updated forecasts to gauge the size of the GDP shock arising from the Covid-19 pandemic. Let  $\Delta gdp_{i,T+q}^{June}$  be the June 2020 IMF World Economic Outlook (WEO) GDP growth forecasts for country  $i$  in quarters  $q = 1, 2, 3, 4$  of 2020, and  $\Delta gdp_{i,T+q}^{Jan}$  be the associated January 2020 IMF WEO forecasts. We compute the June-January forecast revisions as

$$\kappa_{i,q} = \Delta gdp_{i,T+q}^{June} - \Delta gdp_{i,T+q}^{Jan}, \text{ for } q = 1, 2, 3, 4,$$

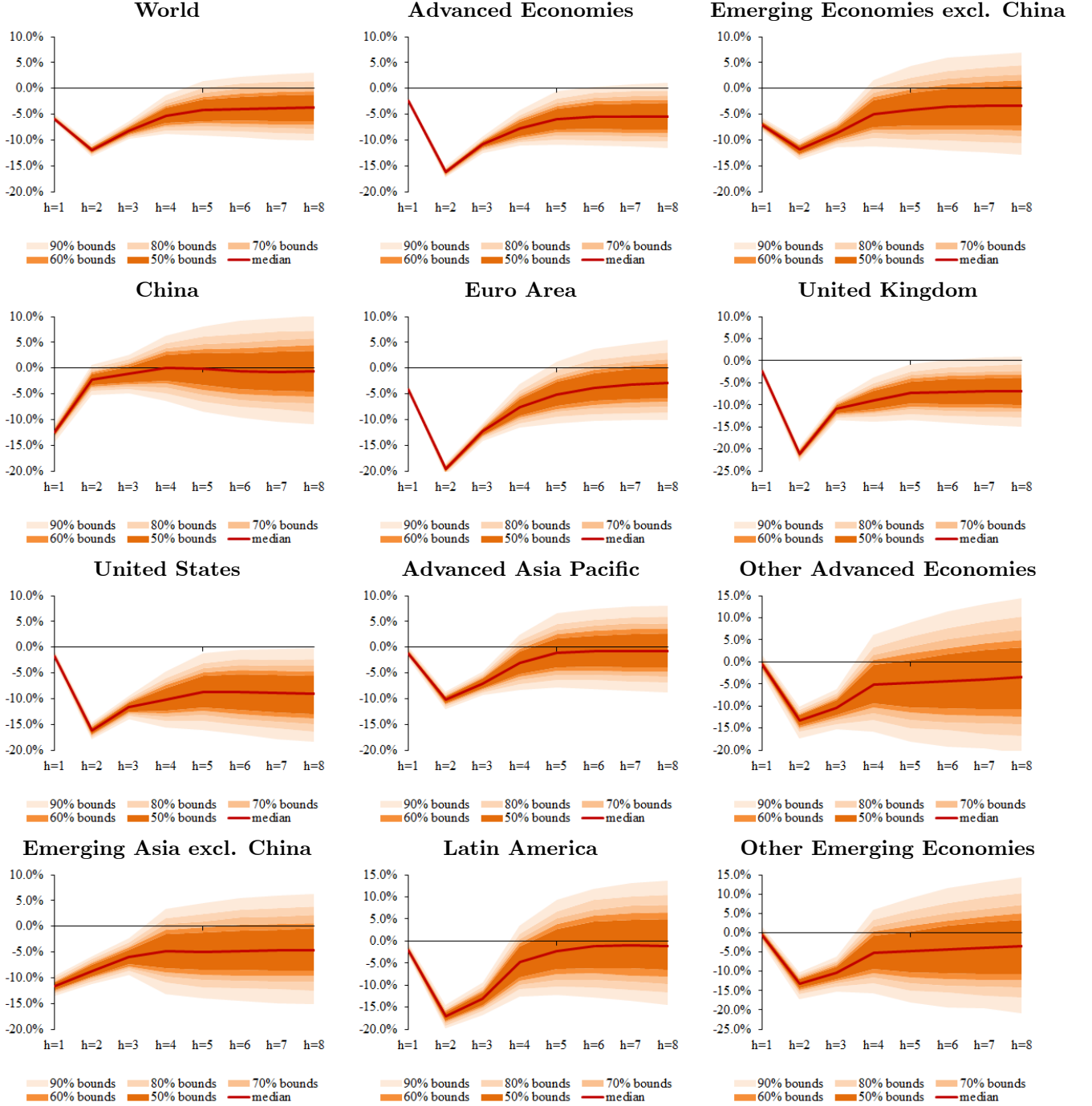
and  $i = 0, 1, 2, \dots, n$ . Assuming that developments surrounding Covid-19 were the only dominant developments behind the forecast revisions, we use  $\kappa_q = (\kappa_{1,q}, \kappa_{2,q}, \dots, \kappa_{n,q})'$ , for  $q = 1, 2, 3, 4$  to infer  $\omega_{T+q}$  and repeat the counterfactual analysis in Section 3. The results are reported in Figures C.1–C.3 and Table C.1. While the new estimates are qualitatively similar to those reported in the main text, they indicate worse growth outcomes and longer recoveries quantitatively.

**Table C.1: Growth Outcomes Following the Covid-19 Shock Using June-January IMF Forecast Revisions (percent change)**

	Q4 over Q4						
	2019	2020				2021	
	Median	10 <sup>th</sup> pctl	Median	90 <sup>th</sup> pctl	10 <sup>th</sup> pctl	Median	90 <sup>th</sup> pctl
<b>Advanced Economies</b>	1.4	-8.9	-5.6	-2.1	2.0	4.9	7.7
United States	2.4	-13.2	-7.9	-2.5	-0.4	3.9	7.2
Euro Area	0.8	-9.8	-5.9	-1.4	3.5	6.8	10.4
France	1.0	-10.6	-6.3	-1.5	2.2	5.0	8.2
Germany	0.4	-11.7	-5.1	2.0	2.4	4.9	7.4
Italy	0.1	-12.7	-7.8	-2.3	2.0	5.8	10.1
Japan	-0.5	-10.8	-4.0	3.0	1.3	5.0	9.0
United Kingdom	1.3	-11.9	-7.0	-1.9	0.8	4.3	6.9
Canada	1.5	-12.3	-7.1	-1.7	-1.6	4.9	10.9
<b>Emerging Markets (excl. China)</b>	3.0	-6.8	-0.5	6.0	2.8	5.9	9.1
Emerging Asia (excl. China)	4.6	-7.1	1.2	9.5	4.0	5.9	7.7
Latin America	0.5	-10.7	-2.8	5.5	0.4	6.2	11.7
China	6.1	2.7	9.2	15.3	4.5	7.7	11.3

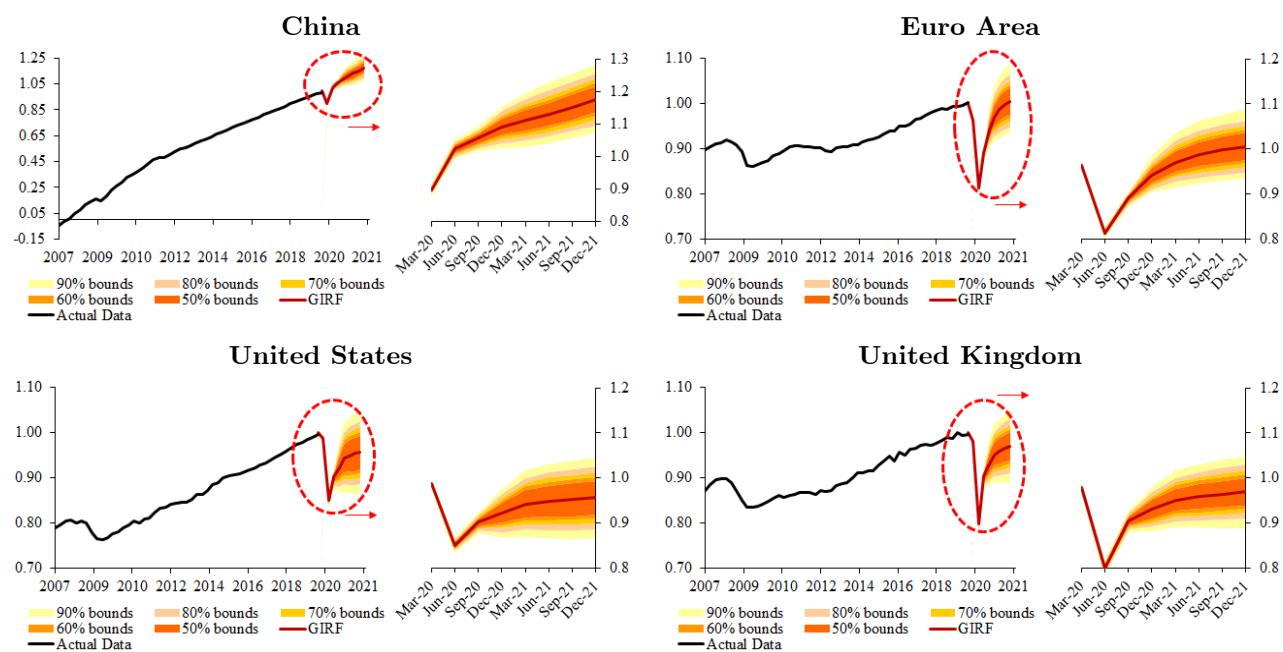


**Figure C.1: The Impact of Covid-19 on Real GDP Using June-January IMF Forecast Revisions (percent deviation from baseline)**



Notes: The impact is in percent and the horizon is quarterly. This figure plots quantiles of  $\eta^c(T, h)$  defined by (29).

**Figure C.2: Dynamics of Real GDP Following the Covid-19 Shock Using June-January IMF Forecast Revisions (in logs; 2019Q4=1)**



**Figure C.3: Dynamics of Regions' Real GDP Following the Covid-19 Shock Using June-January IMF Forecast Revisions (in logs; 2019Q4=1)**

